

A study of Taipei City public high school district

Hsueh-Cheng Chou

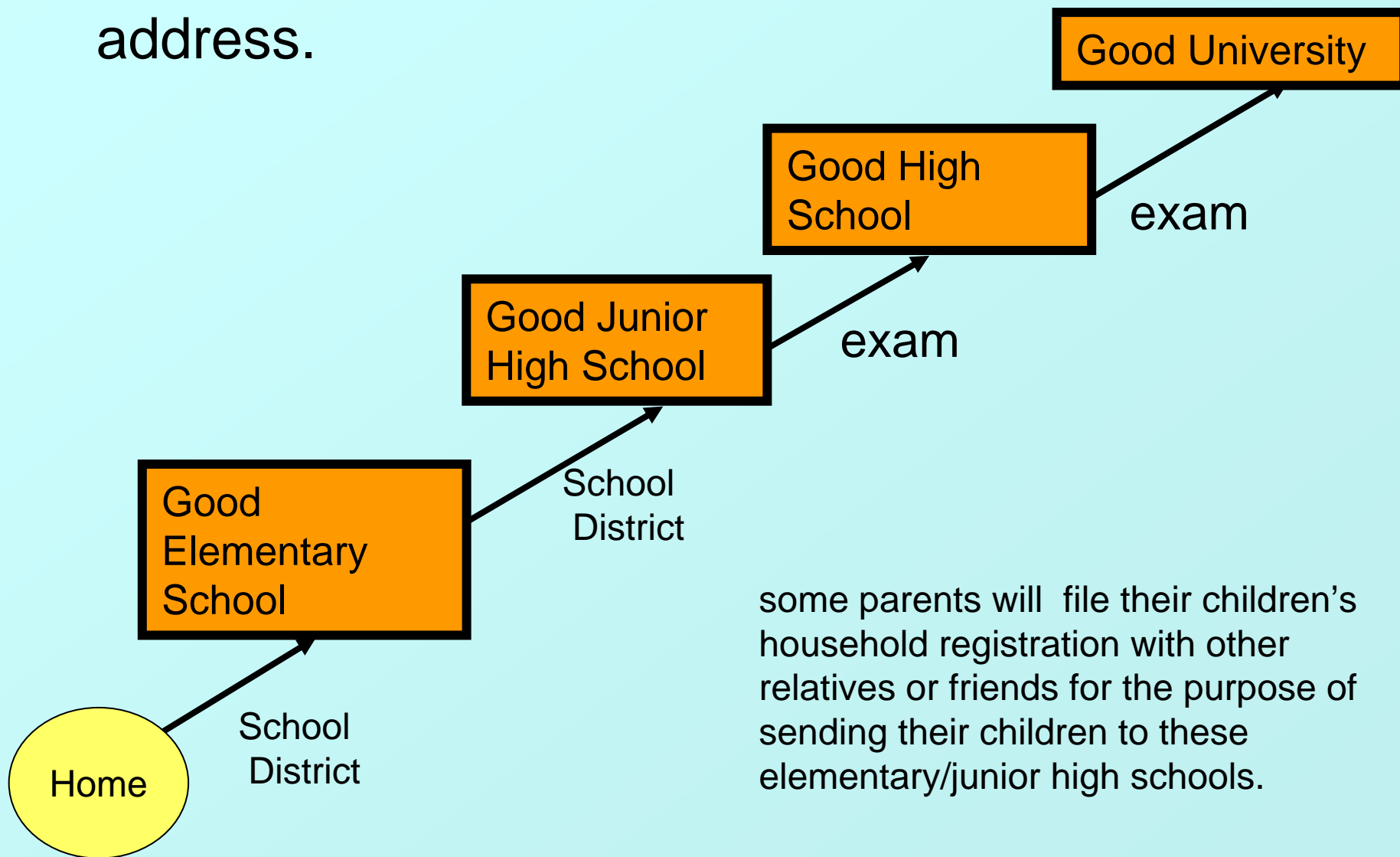
National Taiwan Normal University

Motive

- Taiwan high school use entrance exams to select students for many years.
- The greatest advantage of the entrance exam is its fairness.
- it has been criticized to impact the normal teaching.

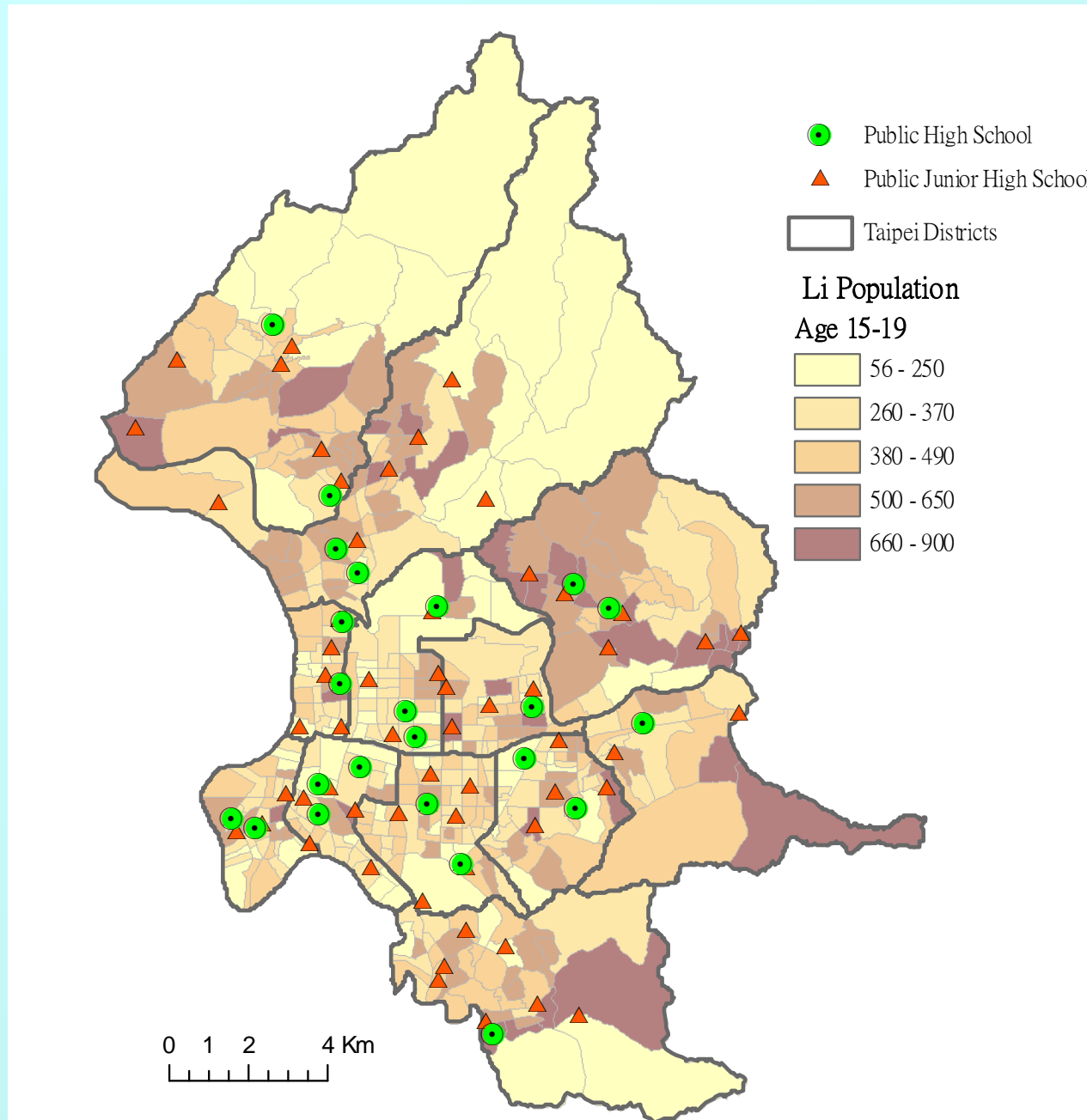
- The performances of students from different high school on college entrance are very different. The fresh man of prestige universities are from a dozen or so high schools.
- The pressures on students are intense, they spend long hours studies and give up many other things in their lives.

- the government is planning to switch to school districts system base on students' home address.



some parents will file their children's household registration with other relatives or friends for the purpose of sending their children to these elementary/junior high schools.

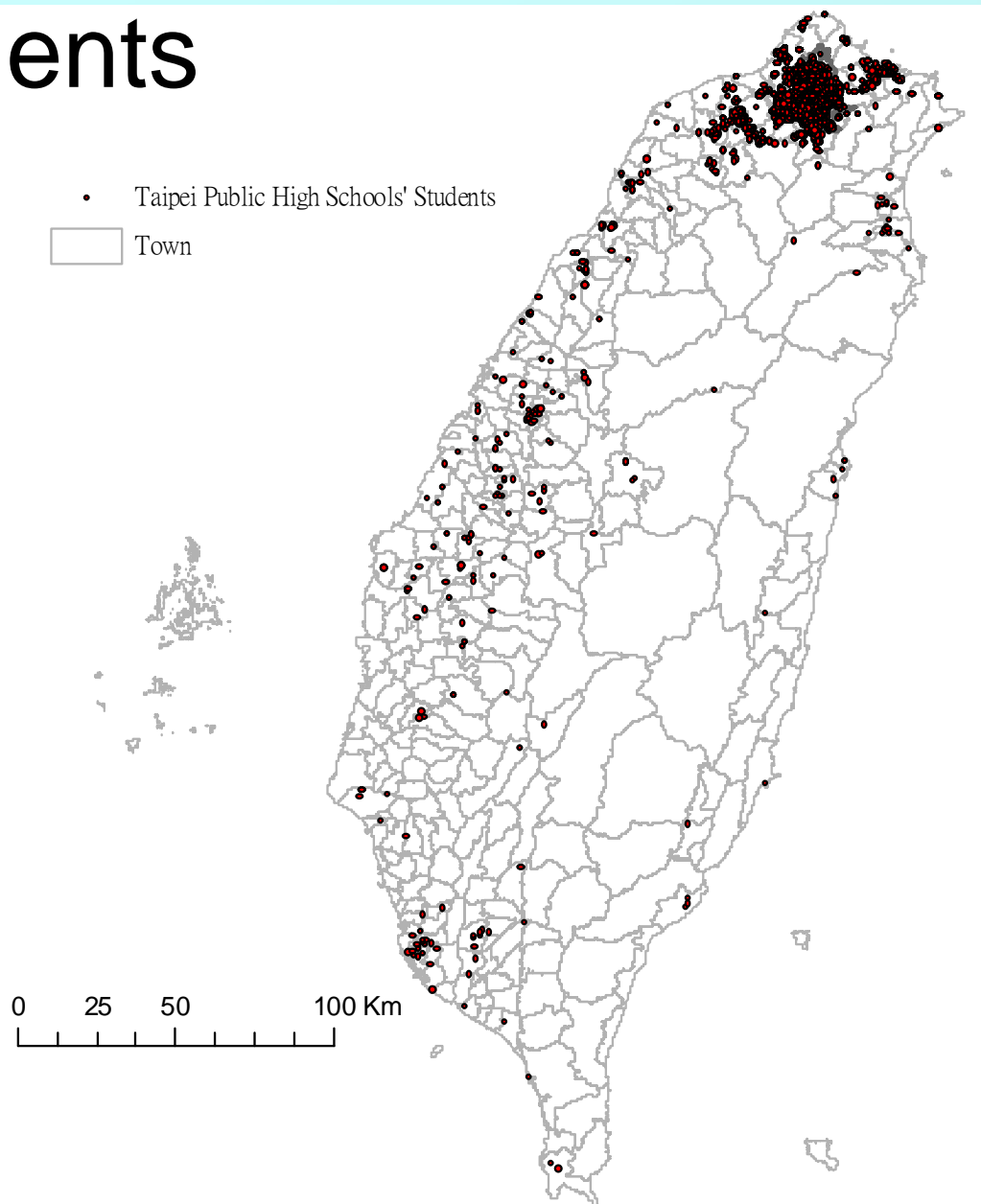
Taipei City Public Middle Schools



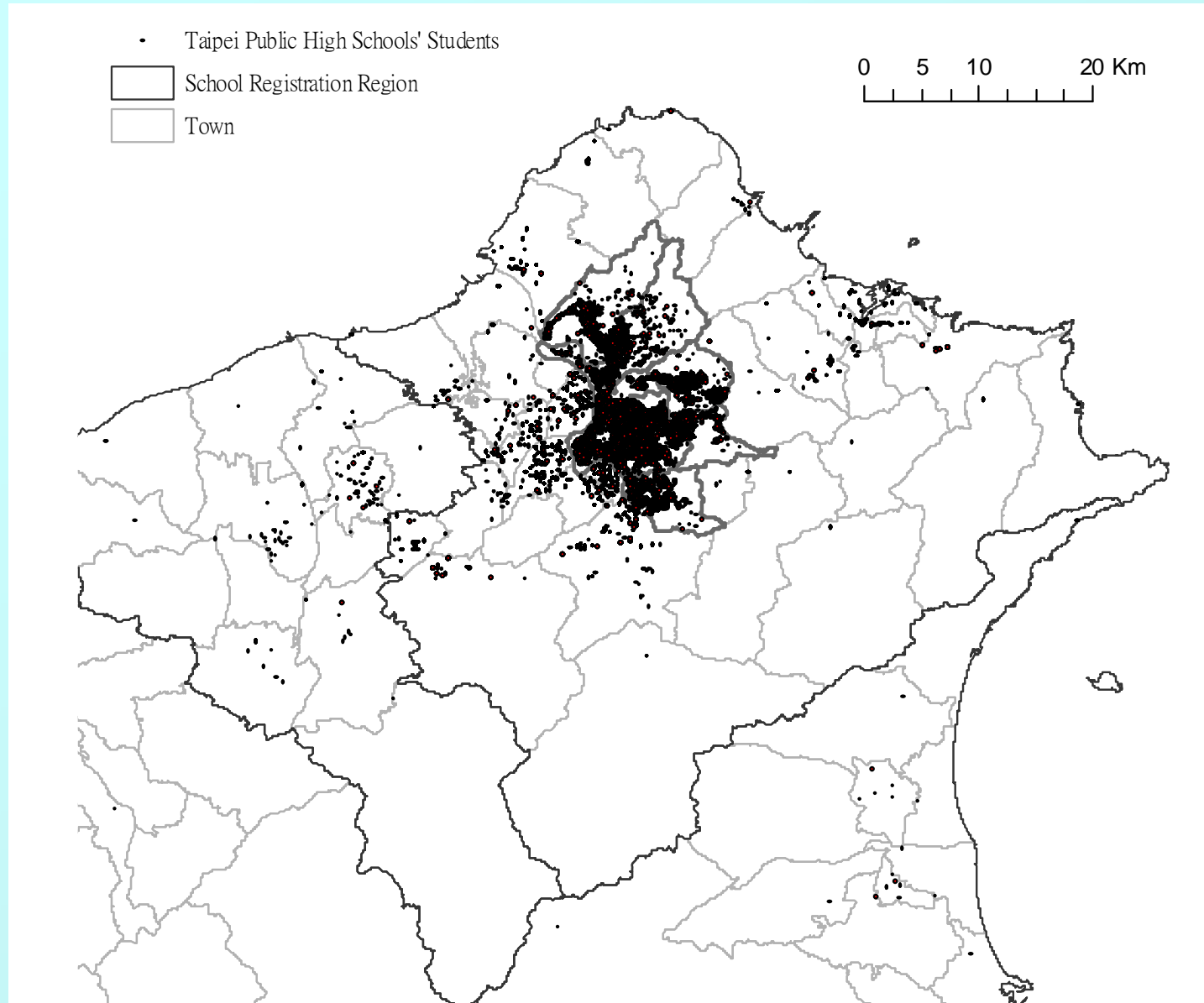
Data

- Taipei City's public school enrollment data 1999 – 2003, 63657 records from 22 public high schools
- variables: home address, graduated Junior high school

Taipei Public High Schools' Students

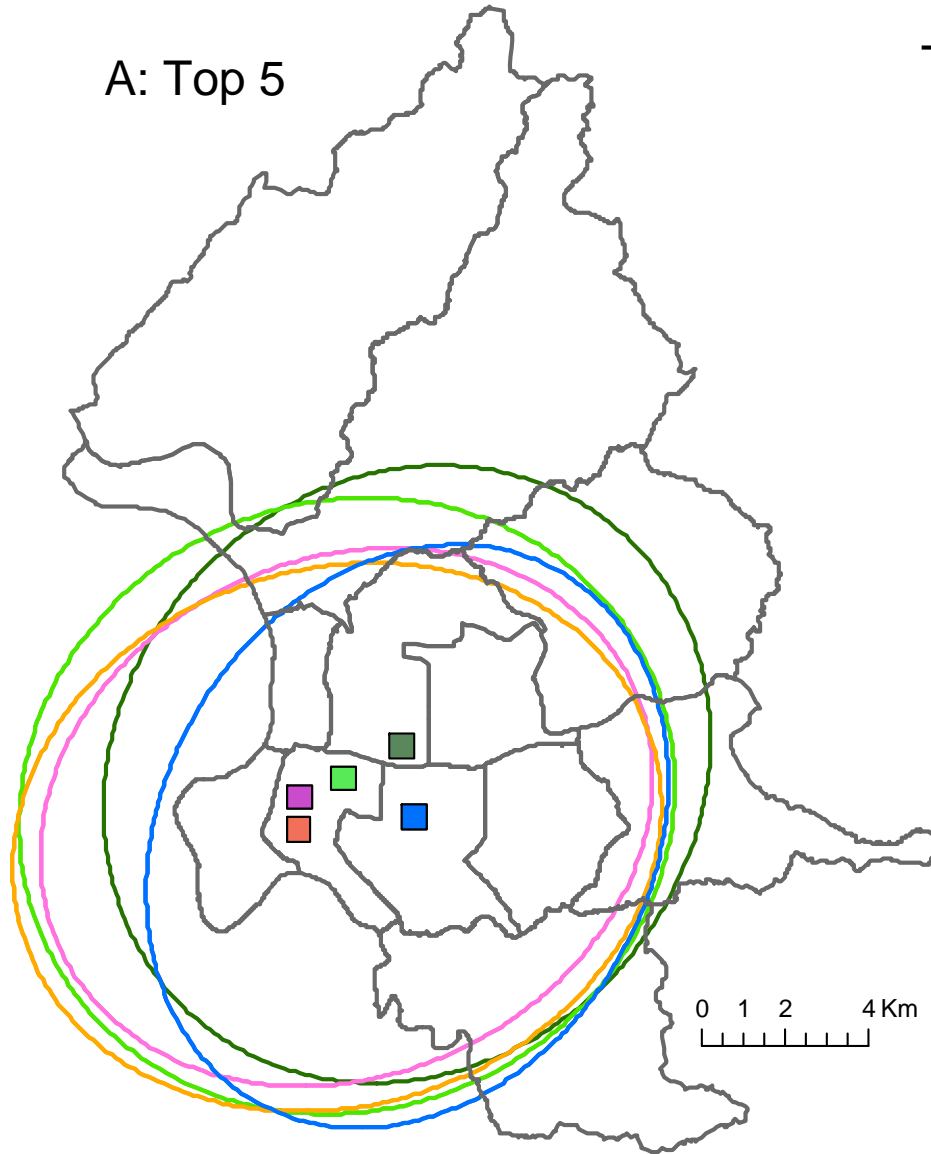


Taipei Public High Schools' Students

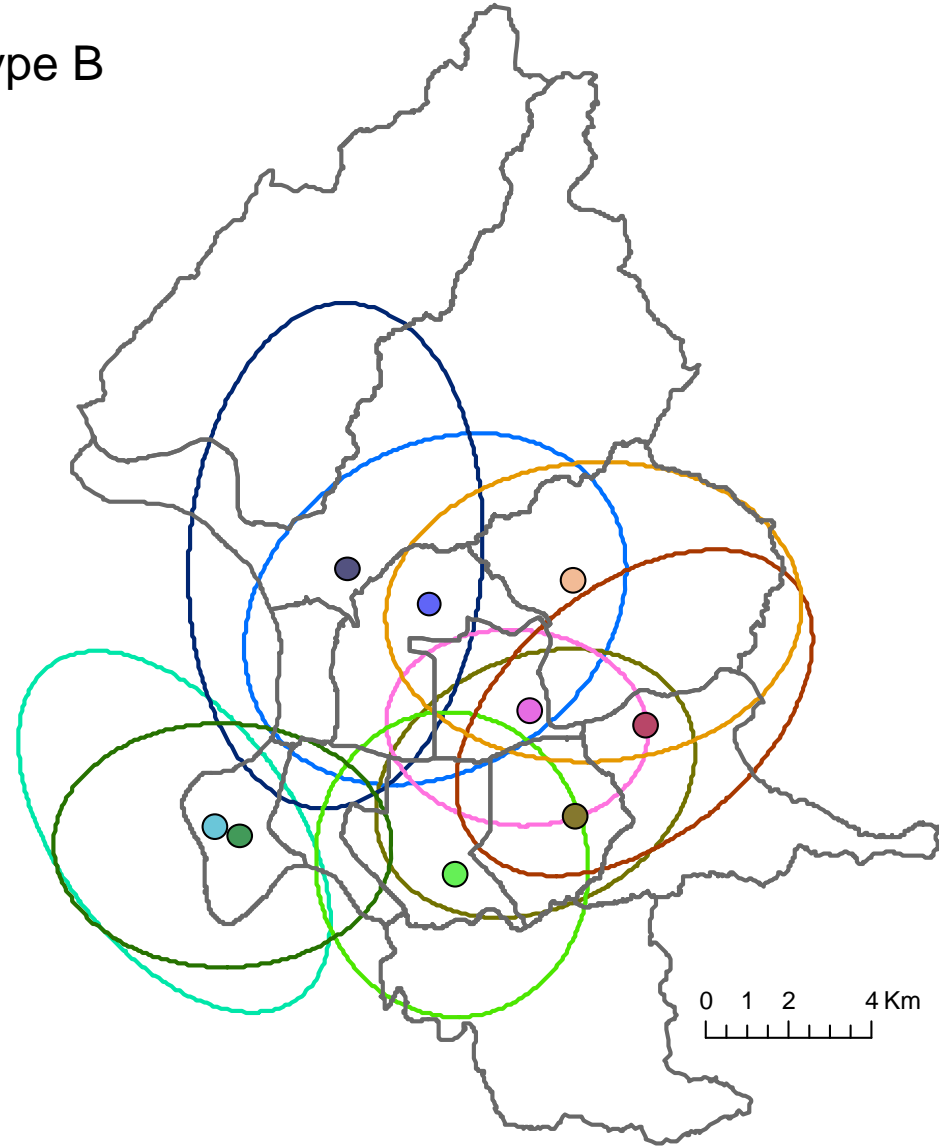


Standard Deviational Ellipses

A: Top 5

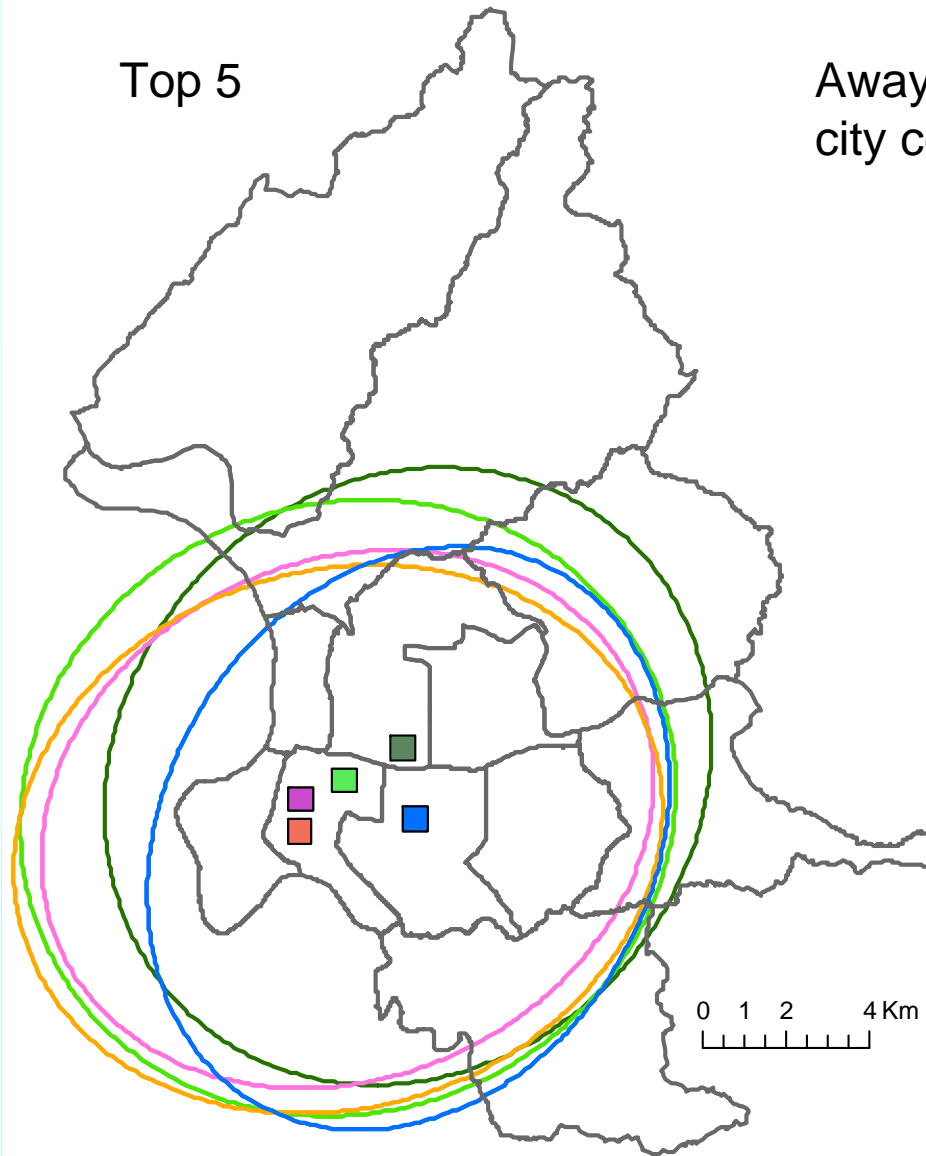


Type B

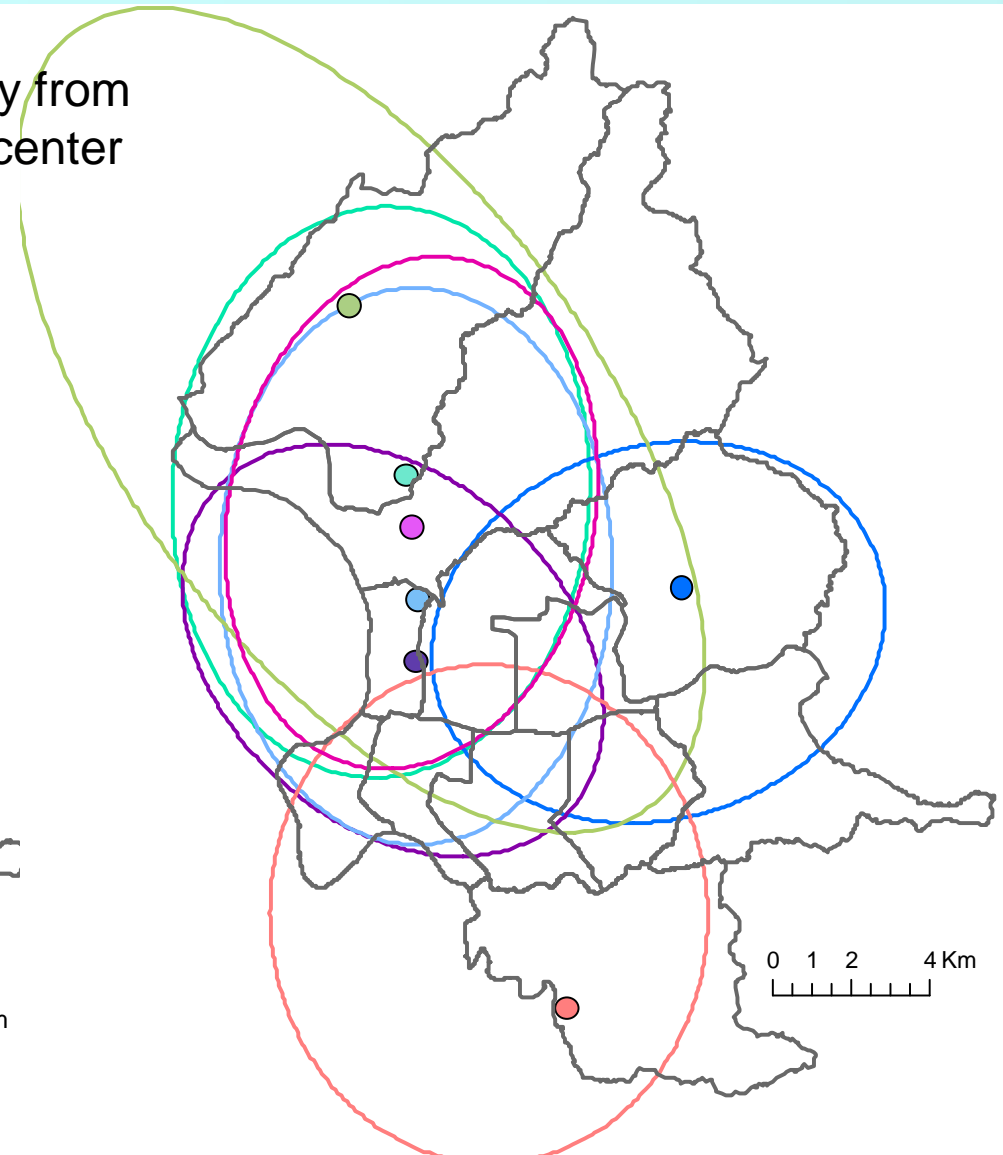


Standard Deviation Ellipses

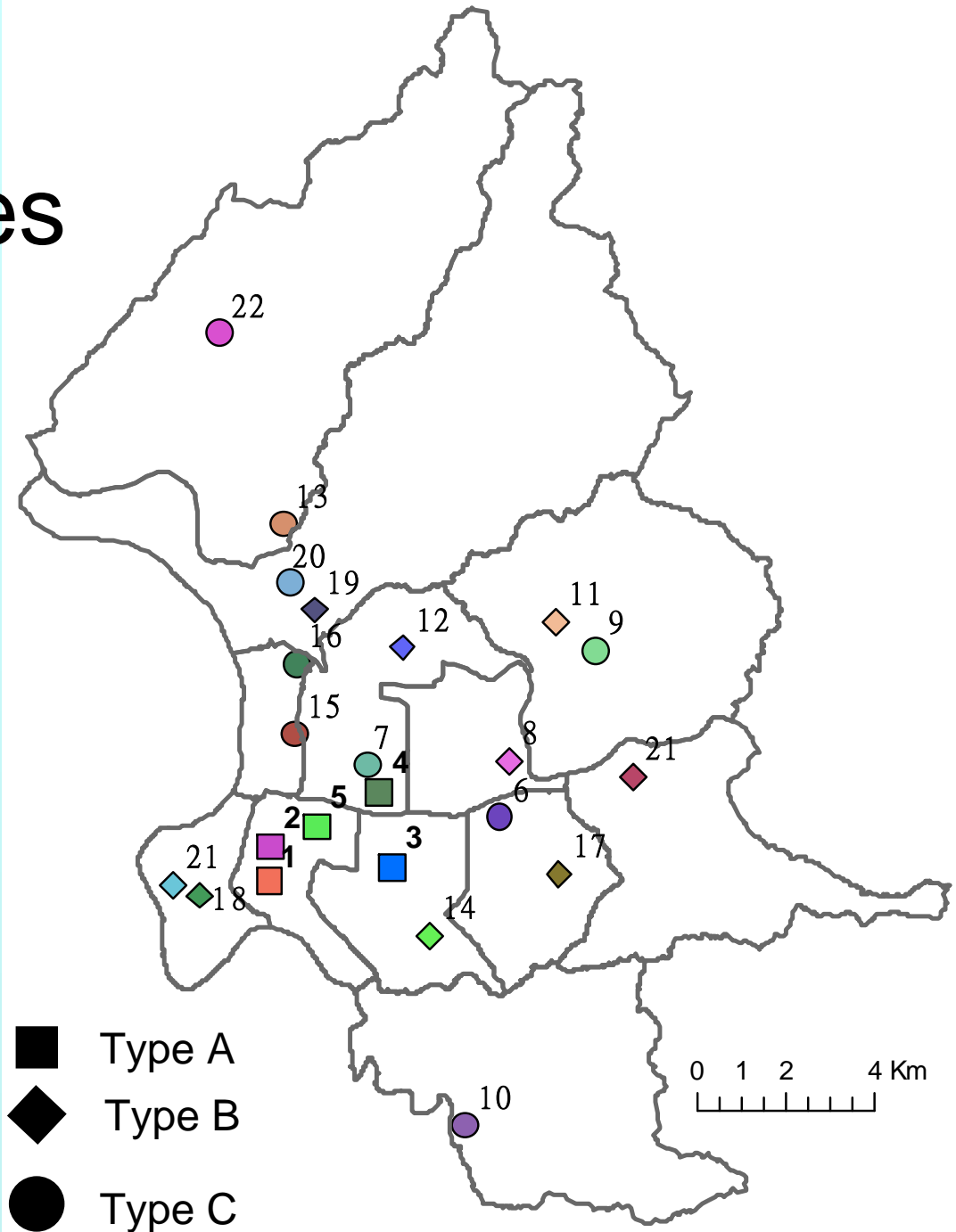
Top 5



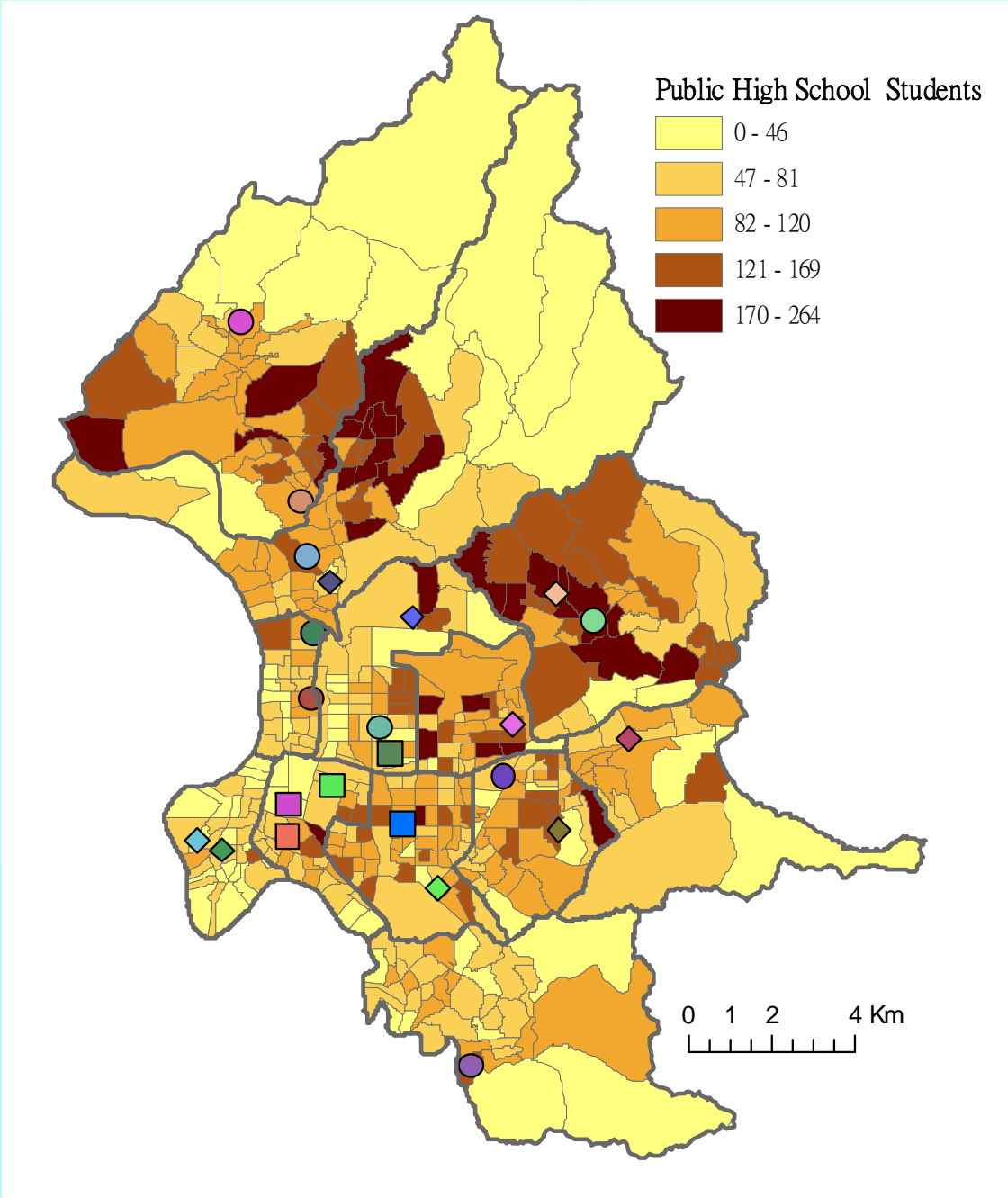
Away from
city center



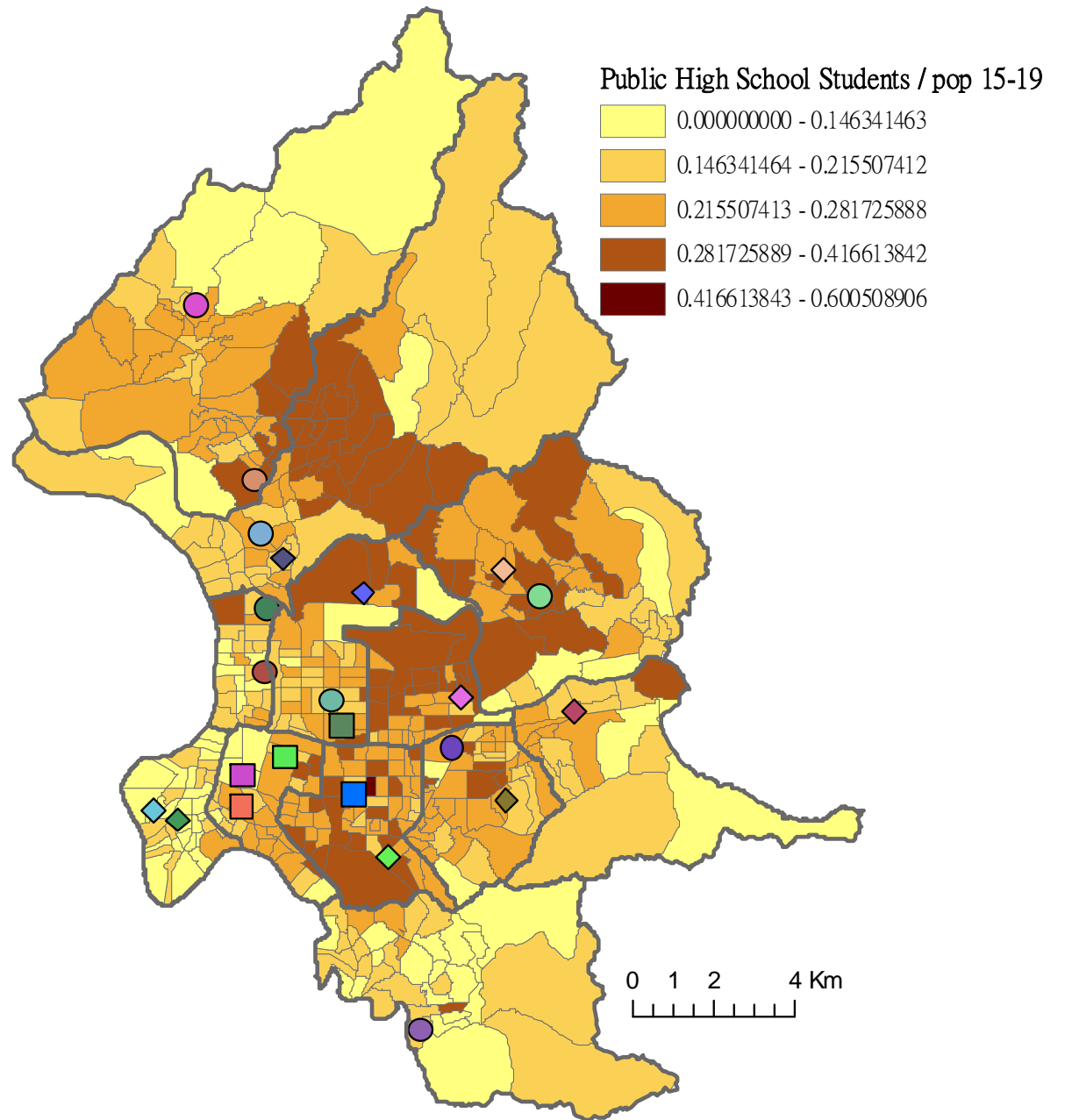
Student catchment types and School Ranking



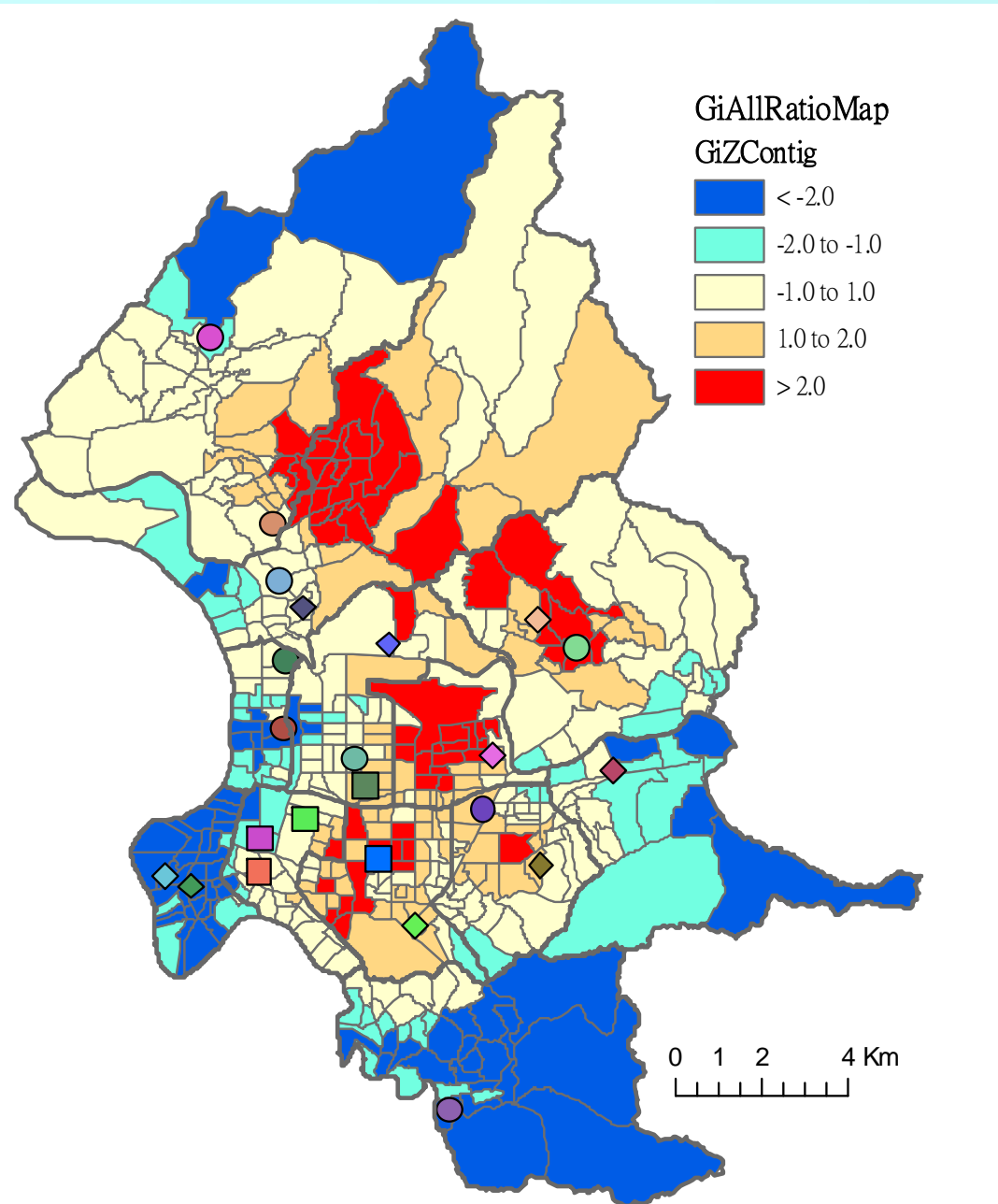
public high school students



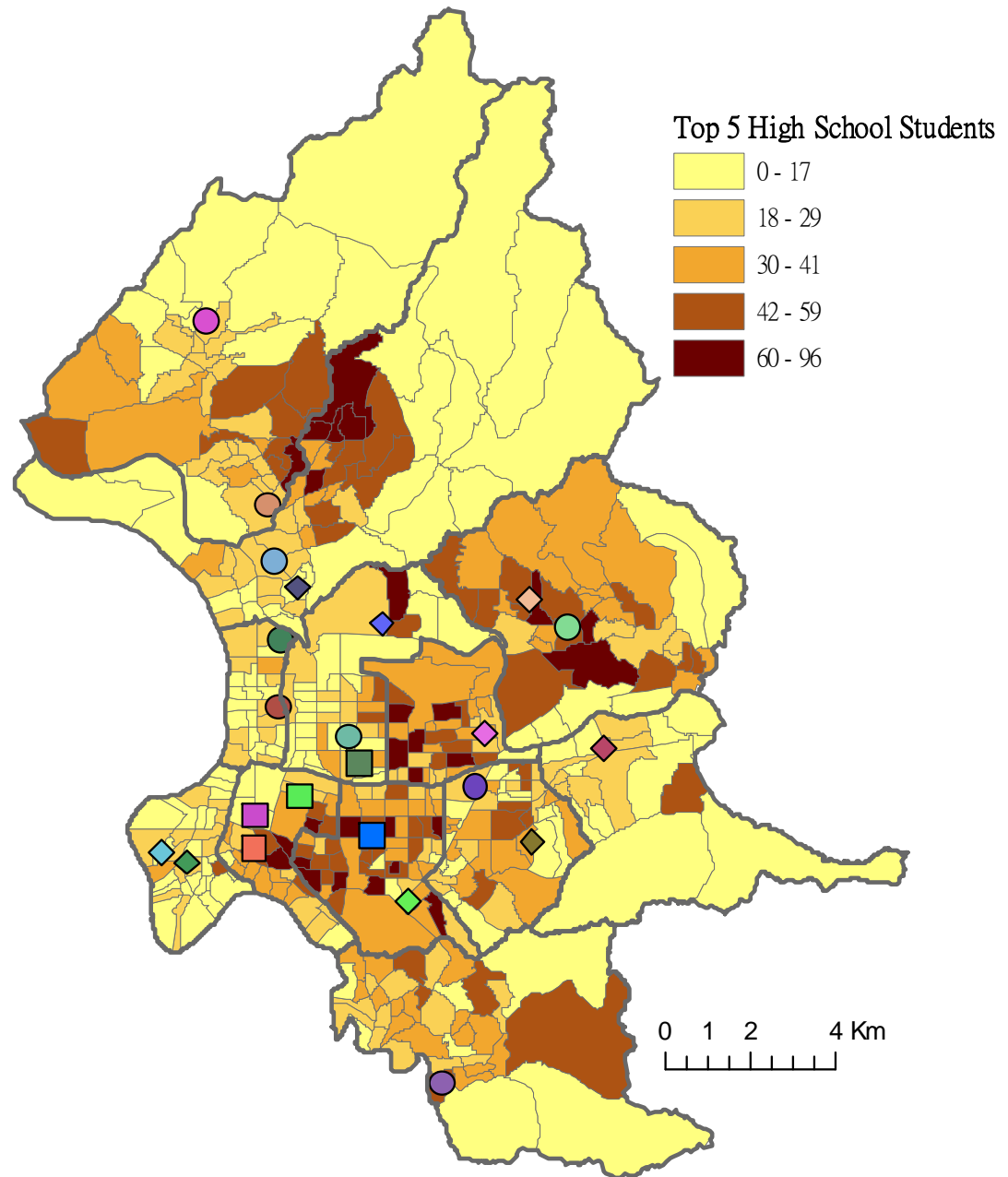
public high school students Ratio



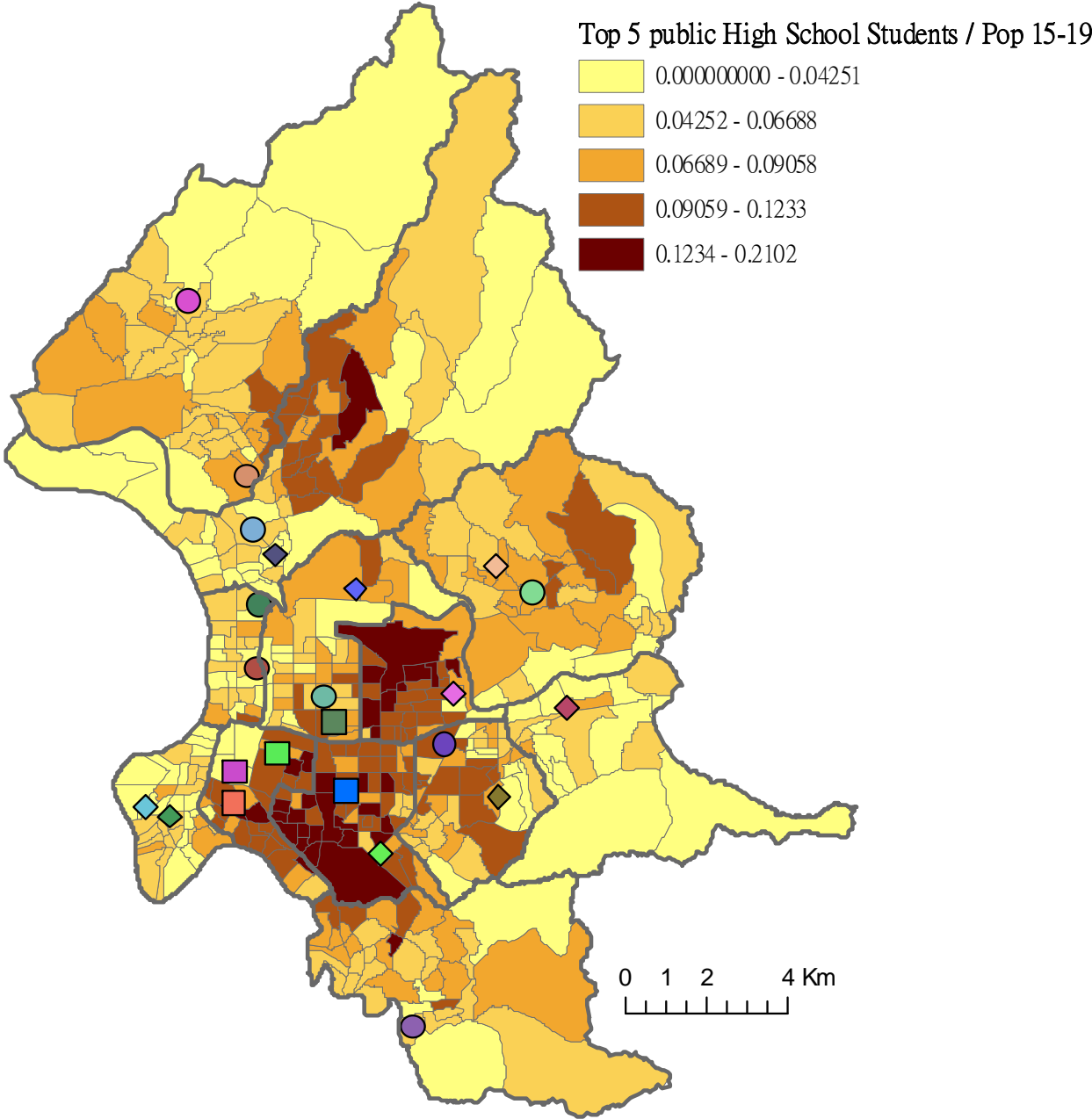
Gi* of public high school students Ratio



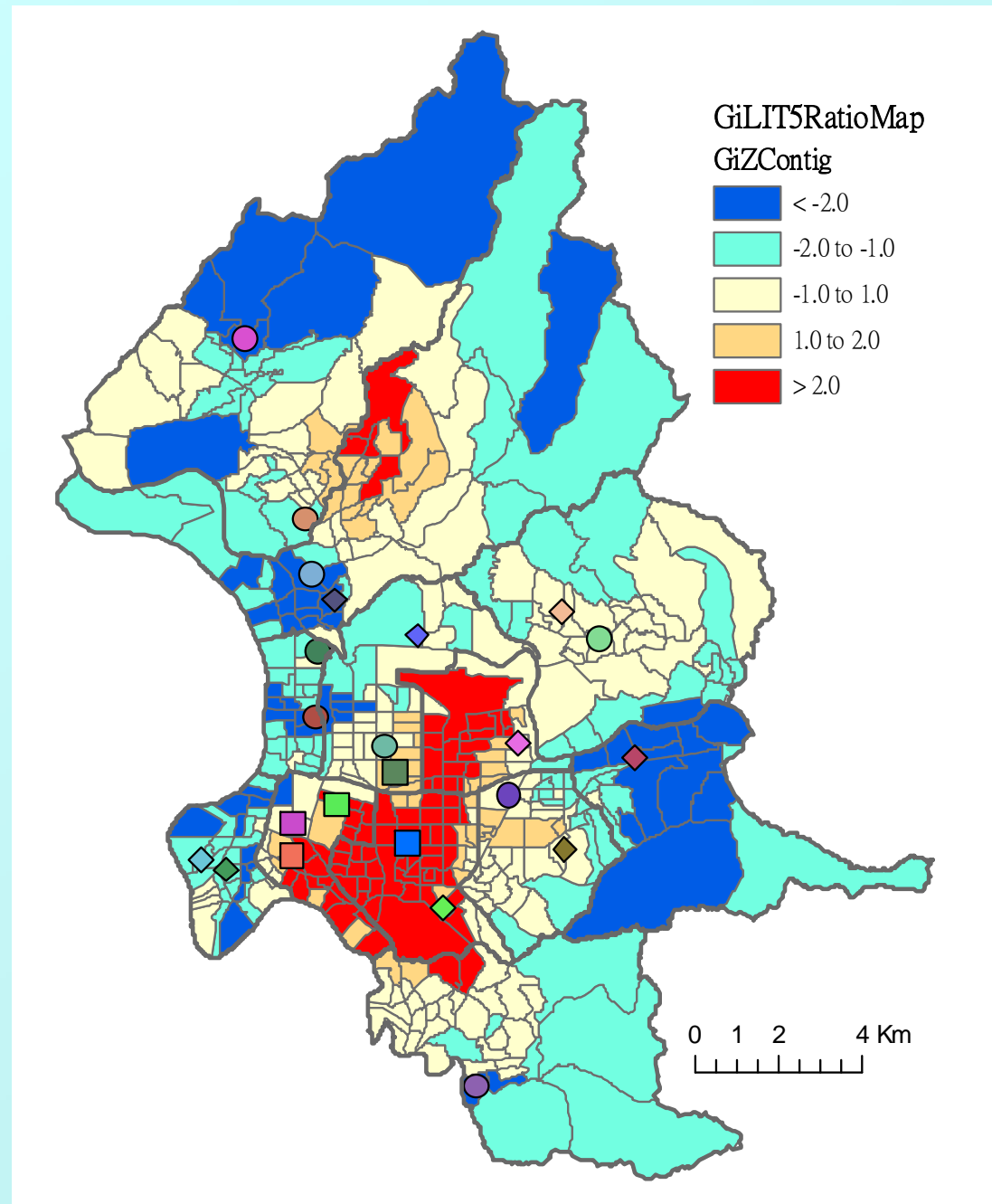
Top 5 public high school students



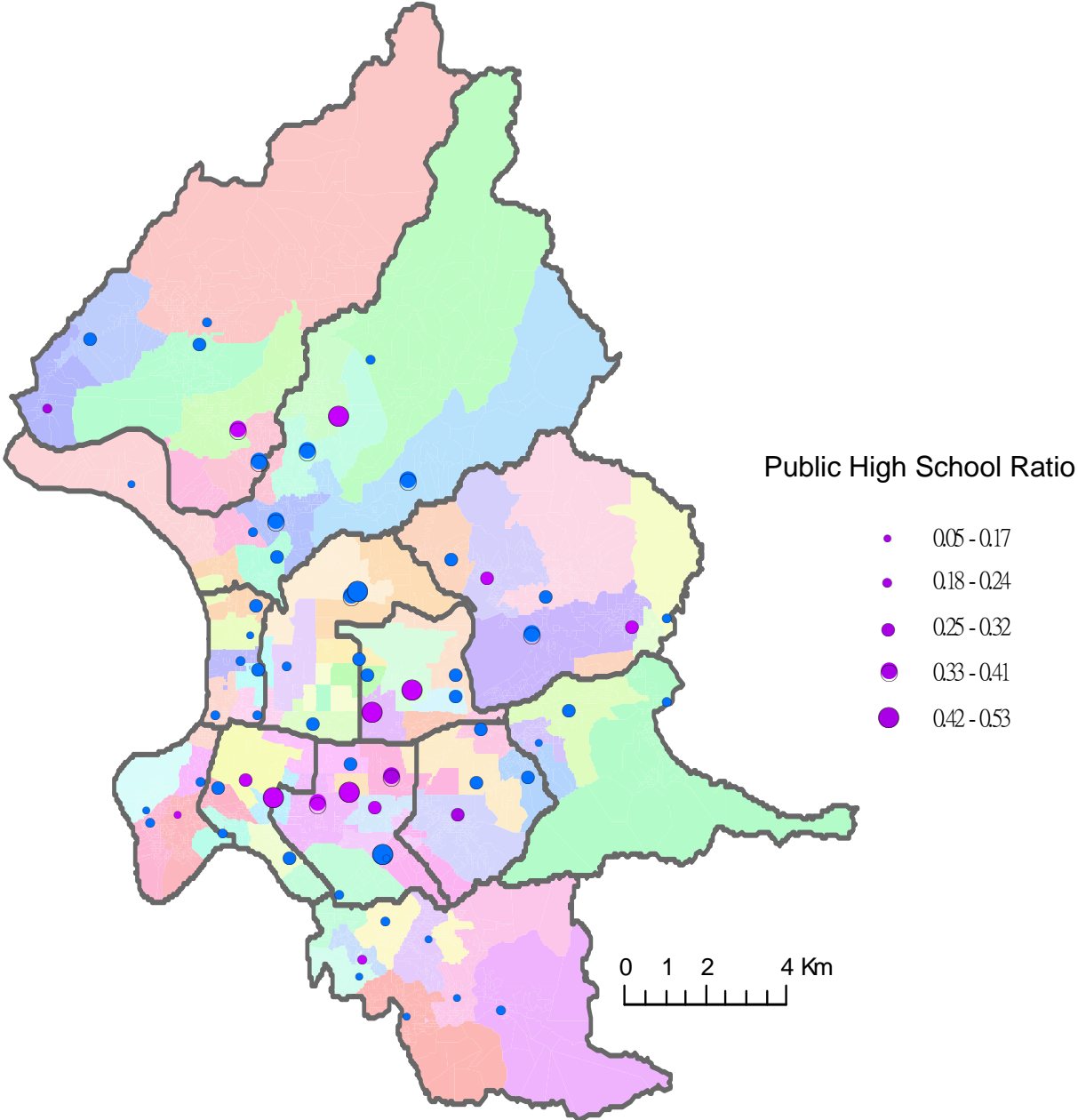
Top 5 public high school students Ratio



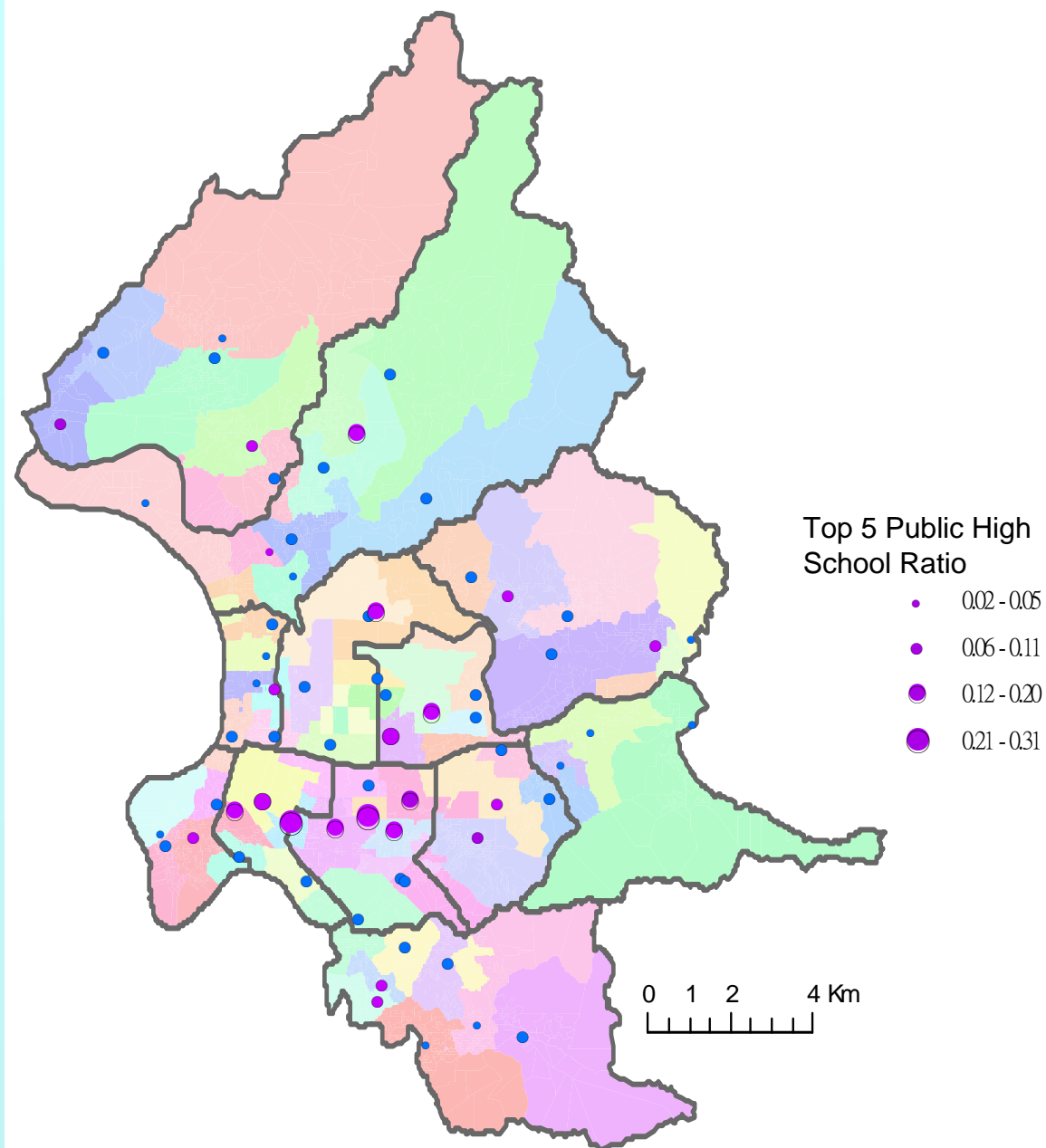
Gi* of public high school students Ratio



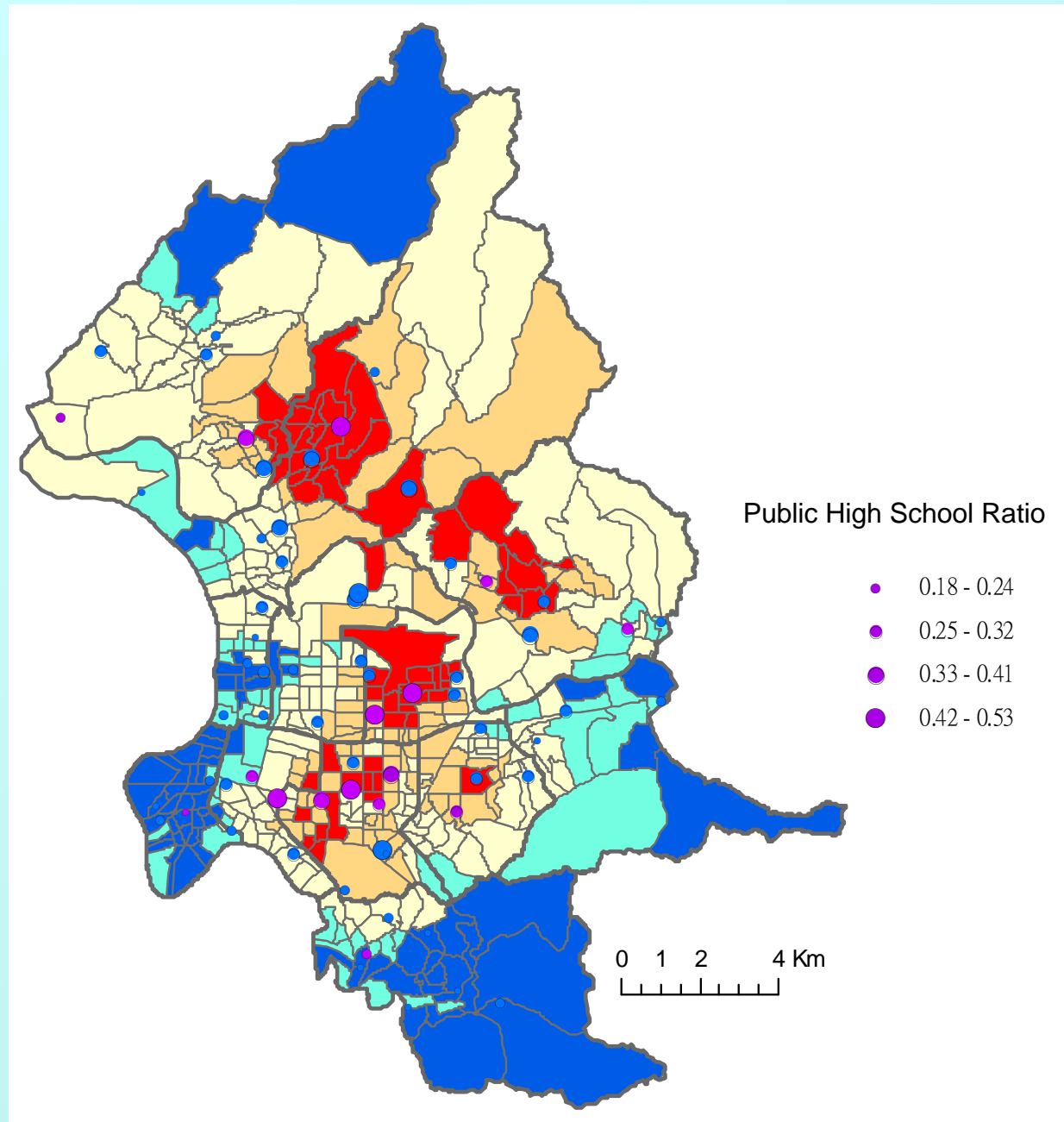
Public Junior high school ranking



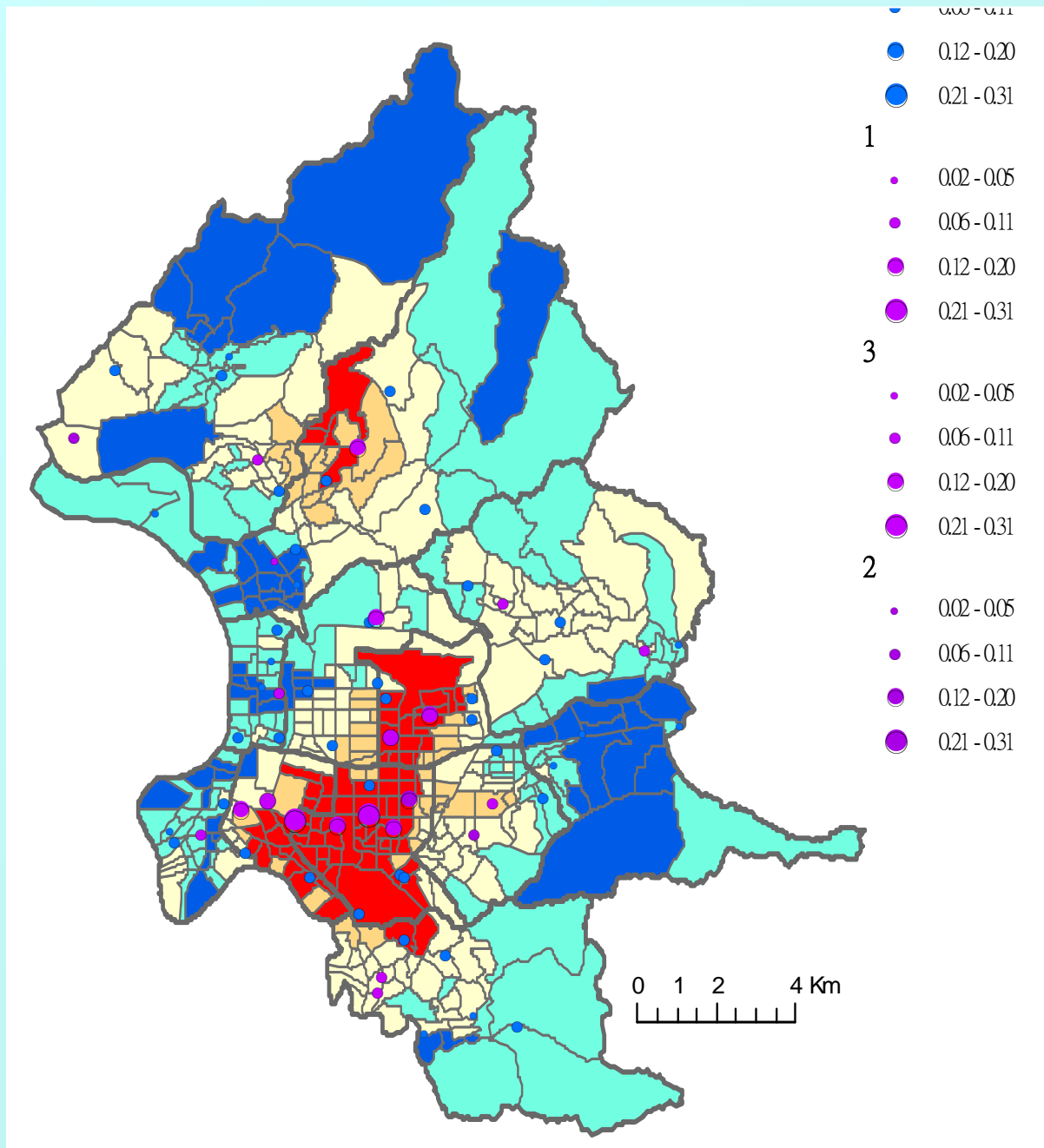
Public Junior high school ranking (for top 5 public high school)

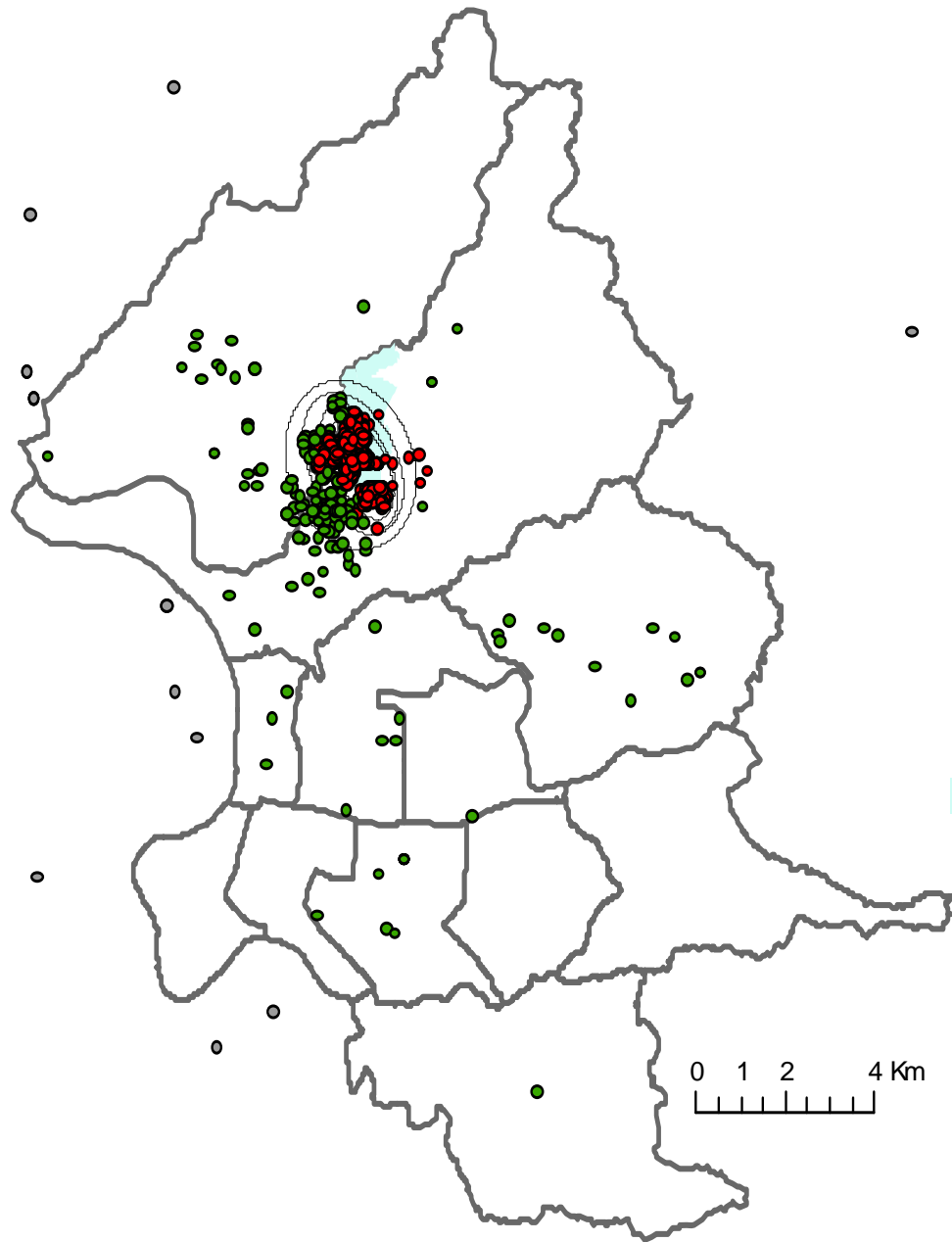


Public Junior high school ranking and Lis' Gi*



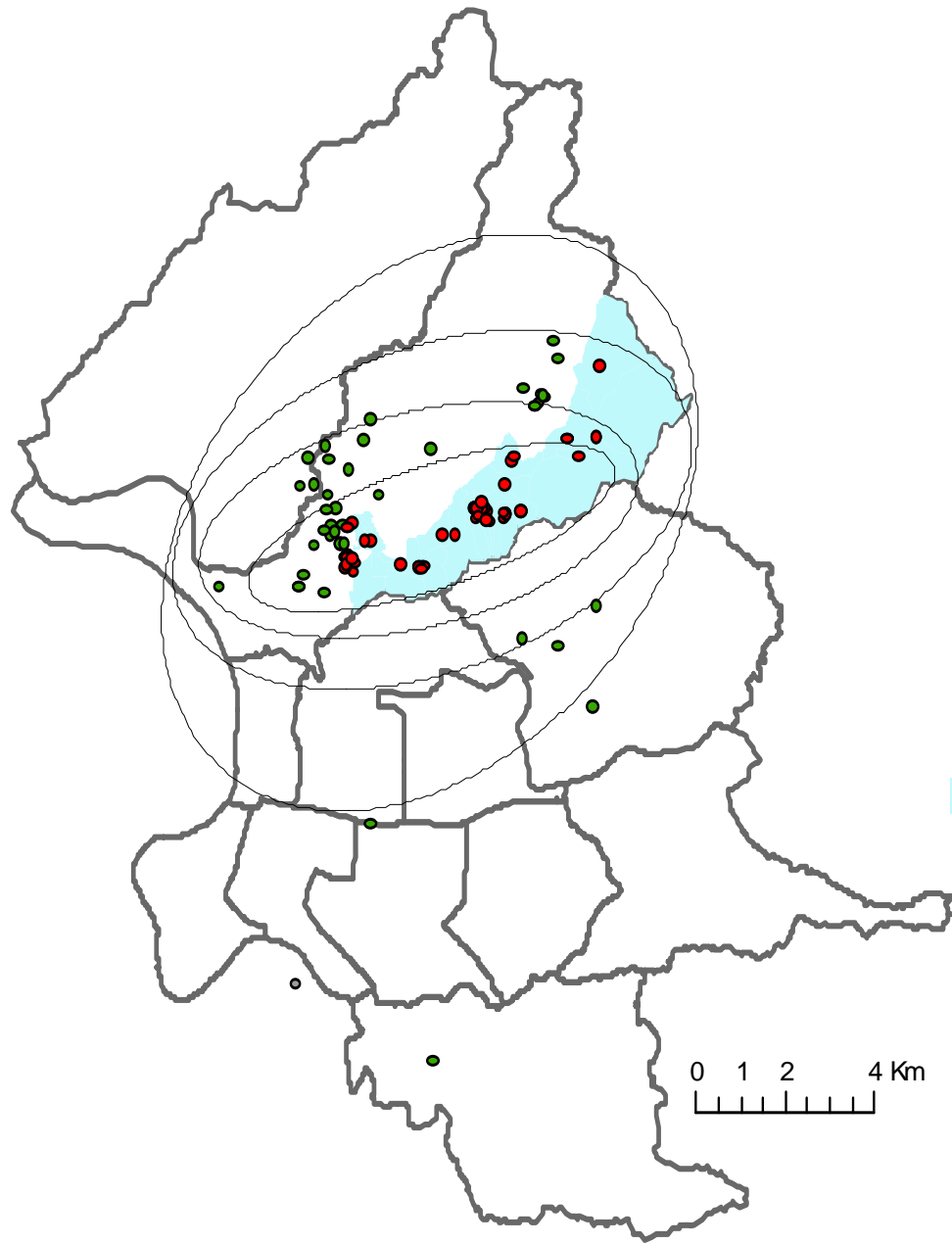
Public Junior
high school
ranking
(for top 5 public
high school)
and
Lis' Gi*





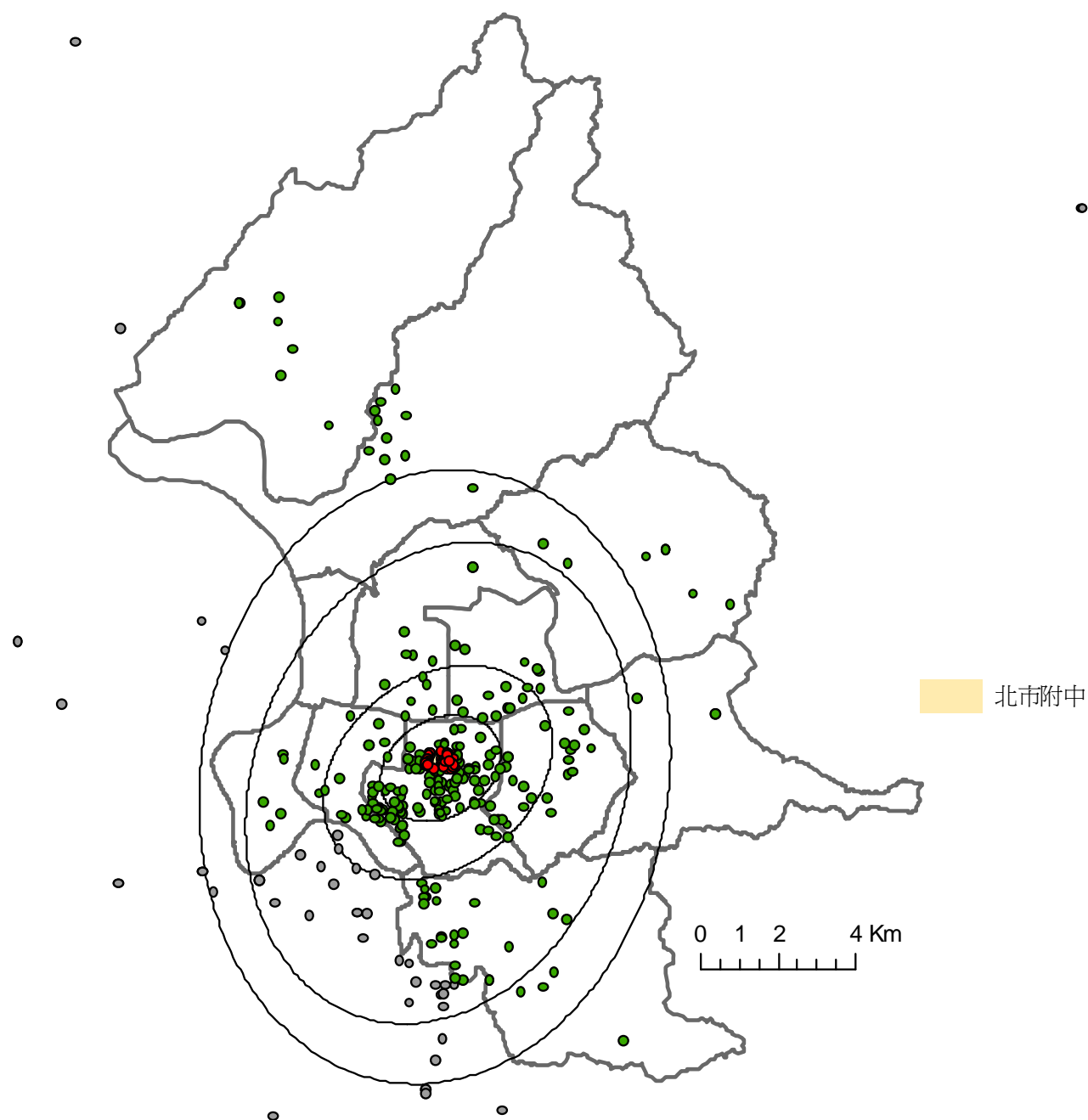
北市天母

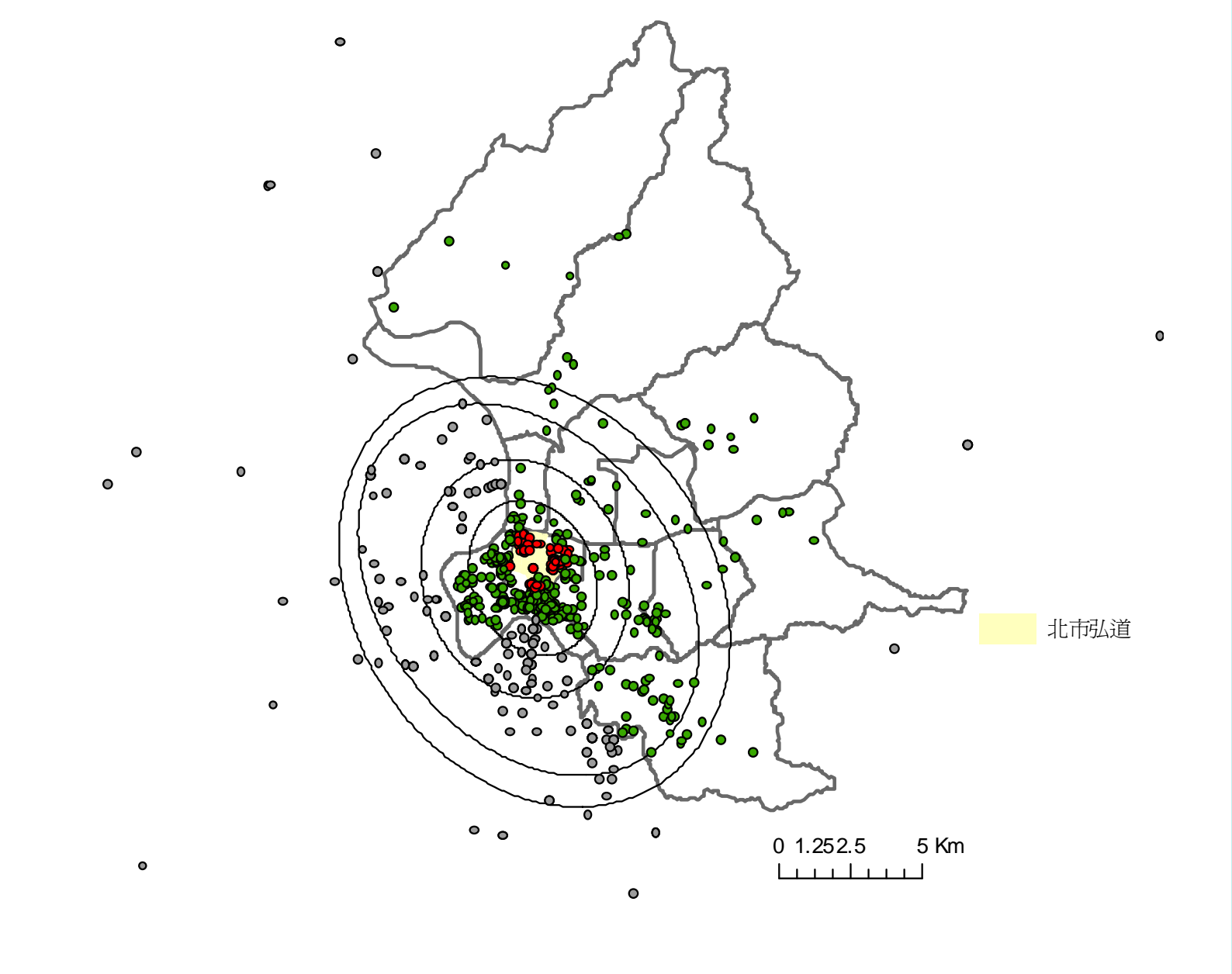
0 1 2 4 Km

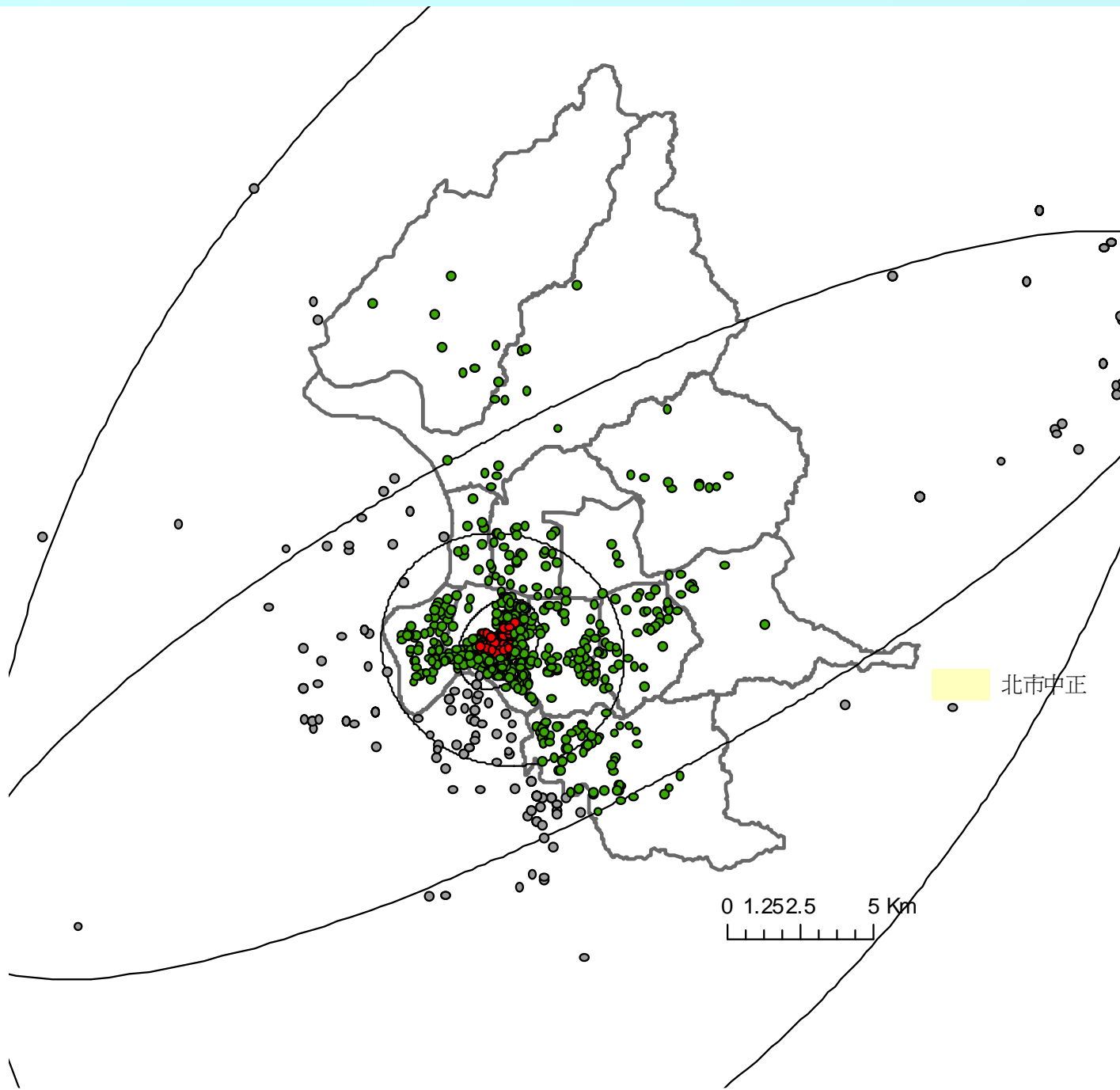


北在善

0 1 2 4 Km







Students from other cities

