

SECRET

April 1943

KARENKO

23° 58' N
121° 37' E

(TAIWAN)

Karenko is a small, artificial "breakwater" port. Karenko Bay is very exposed, the open roadstead offering no protection against easterly winds. 2000-3000 foot mountains rise about 6 miles west of the port.

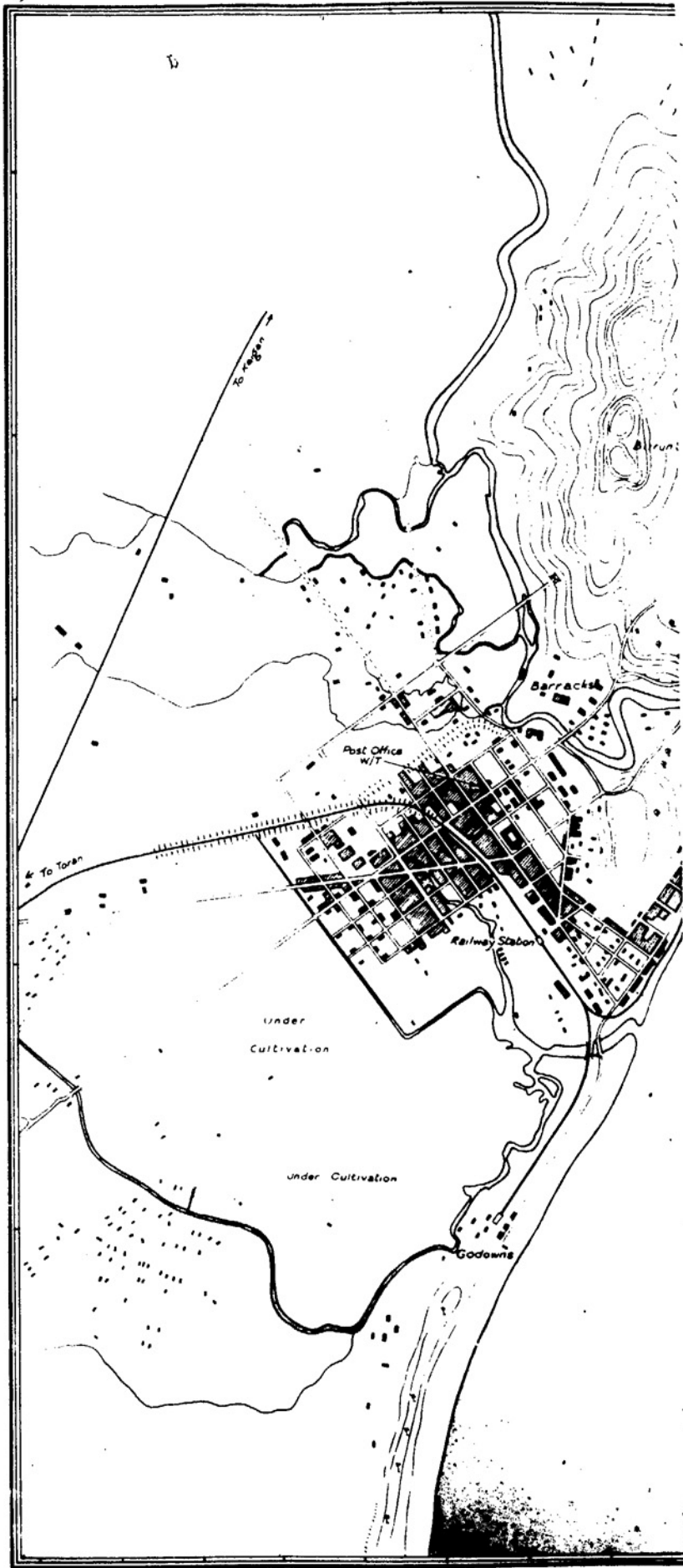
The harbor, formed by a sea wall and breakwater which parallel the shore, extends in a general N/S direction for a distance of approximately 1500 yards.

All berthing and loading facilities (Target 64) are located along the western side. Six wharves are available, 3 of which are believed capable of berthing 6000-ton ships, and the other 3 are known to berth 3000-ton ships. A few ships can moor at buoys in the southern part of the harbor. There are about 10 warehouses along the western side and a single track railroad spur connects this part of the harbor with the Karenko RR Station about 3 miles to the SW.

The principal commodities handled at Karenko are (1) bauxite (2) nickel ore and (3) phosphate rock.

SECRET

AD-1464

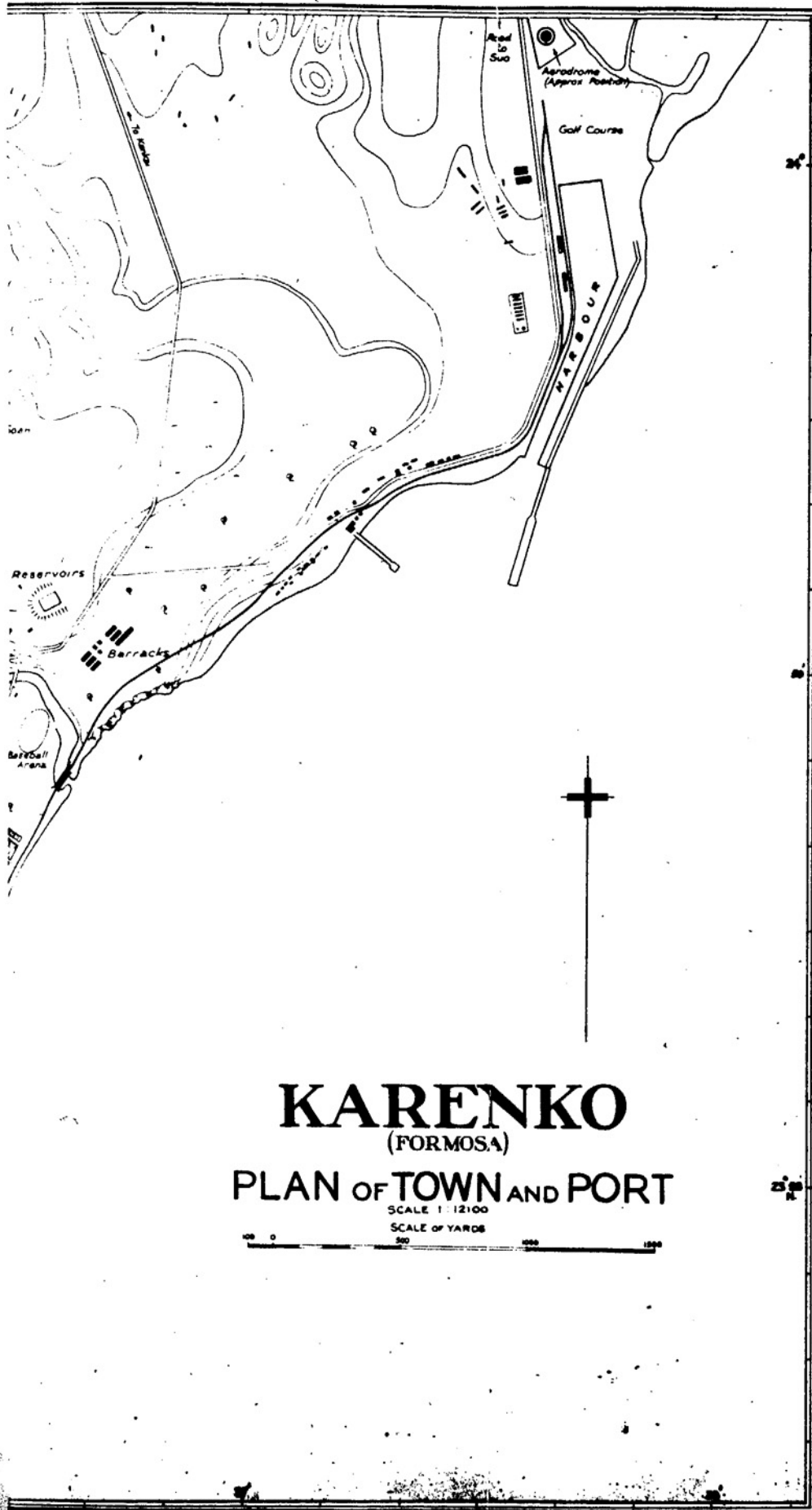


Prepared by Naval Staff (I.B.)

Produced under the Super...

0070

49
July
1937



KARENKO
(FORMOSA)
PLAN OF TOWN AND PORT

SCALE 1:12100
SCALE OF YARDS
0 500 1000 1500

Drawn by Res. Admiral L.A. Edgell, C.M.D.R.E. Hydrographer.

SECRET

April 1943

HONGKONG
(CATIAO)23° 00' N
121° 45' E

The inner harbor is well sheltered, but affords only limited anchorage space for vessels anchoring in a general E/S line. The outer harbor is larger, but is open to the north.

All berthing facilities are located along the NW side of the inner harbor. Space is available for berthing a maximum of 20 ships of 2,000 tons. The Northwest Wharf (Target 15a) is approximately 1,000 yards long, of the "rade load" type, concrete surfaced. There are approximately 6 concrete storehouses, most of three stories. Railroad spurs run the entire length of the wharf and heavy-duty loading machinery is available to handle all cargo. This wharf is used almost exclusively for military equipment and stores.

Just SW of the wharf at the east end of a small inlet, is the "Kung Ho Doon" (Target 15b) where 2 dry dock and 1 repair slip are available for repairs. This inlet is also the site of large coal and fuel oil stores, and all lubricants, as follows.

To the south of this inlet is the Southwest Harbor Wharf (Target 15c), the site of the China Petroleum Station and about 5 general storehouses. This wharf is approximately 700 yards long, of the "rade load" type, concrete surfaced. This wharf is used for transshipment of rice, sugar and other commodities.

700-foot hills enclose this harbor on the east, south and east.

SECRET

AD-1464

THIS PAGE IS UNCLASSIFIED

THIS PAGE IS UNCLASSIFIED



SECRET

THIS PAGE IS UNCLASSIFIED

Co. record in N.M.

Page No.																					
No.																					

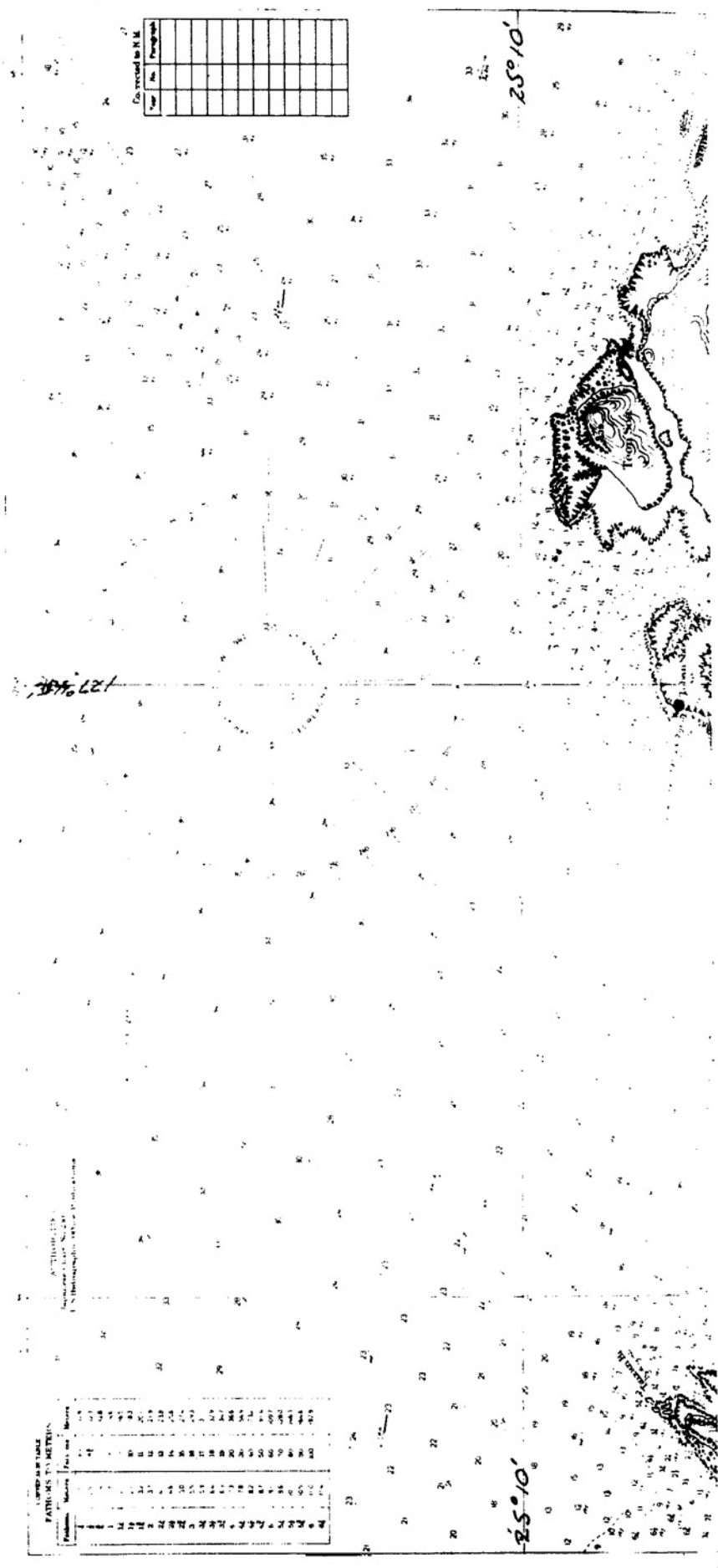
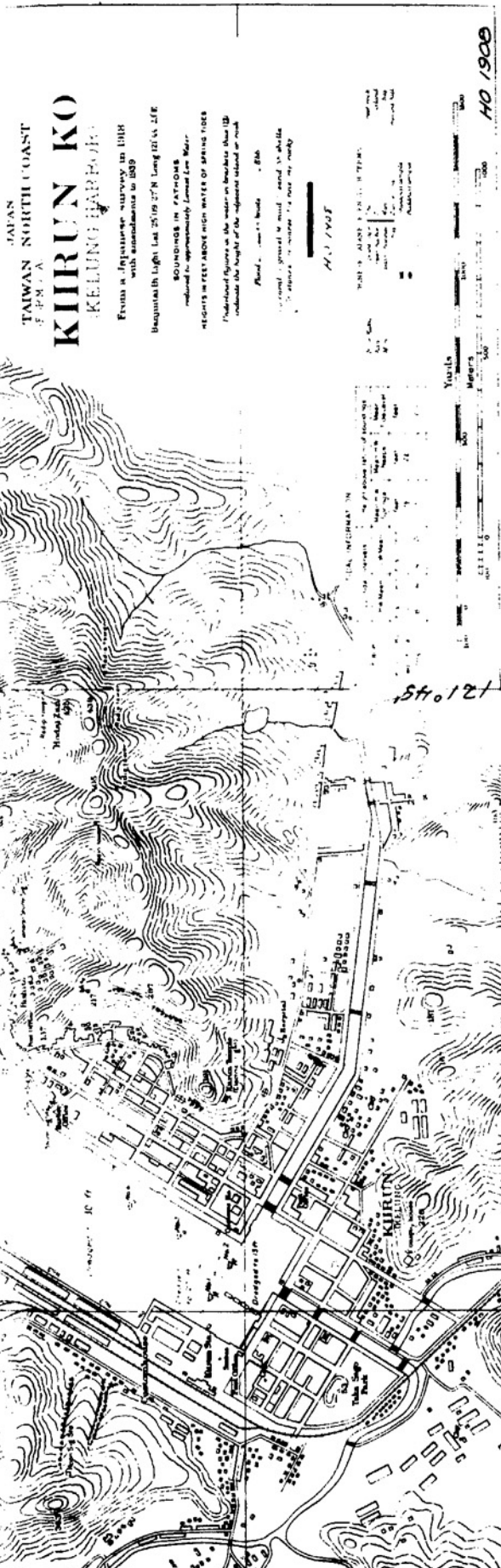


TABLE OF SOUNDS IN FATHOMS

FATHOMS TO METERS	
Fathoms	Meters
1 1/2	2.74
2	3.66
2 1/2	4.57
3	5.49
3 1/2	6.40
4	7.32
4 1/2	8.23
5	9.14
5 1/2	10.06
6	10.97
6 1/2	11.89
7	12.80
7 1/2	13.72
8	14.63
8 1/2	15.54
9	16.46
9 1/2	17.37
10	18.29
10 1/2	19.20
11	20.12
11 1/2	21.03
12	21.95
12 1/2	22.86
13	23.78
13 1/2	24.69
14	25.61
14 1/2	26.52
15	27.44
15 1/2	28.35
16	29.27
16 1/2	30.18
17	31.10
17 1/2	32.01
18	32.93
18 1/2	33.84
19	34.76
19 1/2	35.67
20	36.59

Nautical Chart No. 1173
SOUNDINGS
U.S. Hydrographic Office, Washington





April 1943

SECRET

24° 14' N
120° 30' E

NIITAKA (GOSEI)
(TAIWAN)

This "breakwater" port has been developed recently to handle some of the non-military shipping which formerly used the port of Keelung. The port is located at the mouth of a small river and will accommodate only vessels of about 2000-3000 tons.

At least one wharf (Target 100) with six storehouses is available. A RR spur from this wharf connects with the Takeo-Keelung trunk RR line.

The port is still being expanded, and it is possible that additional facilities may now be available.

SECRET

AD-1464

April 1943

SECRET

22° 37' N
120° 15' ETAKAO
(TAIWAN)

Takao is a "breakwater" port, the entrance to which is very narrow and could be blocked by the sinking of one or two large ships there. The port is at the mouth of a long, shallow lagoon, but ships must anchor just south of the main wharf, in a general east-west line.

The Military Storehouse Wharf (Target 8a) is about 1500 yards long, concrete surfaced, and can berth about 4 ships of 3,000-5,000 tons. Railroad spurs from the freight yard (which lies just to the west) run the entire length of the wharf, and heavy-duty loading machinery is available to handle all cargo. There are 15-25 storehouses, about 8 of which are large, and of steel frame, galvanized iron construction. A cold storage plant (used for military supplies) lies at the east end of the wharf.

A smaller wharf (Target 8b) is located just east across a small river mouth from the main wharf. This wharf is also concrete surfaced, and it is the site of several storehouses. Oil bunkering facilities are available at the south end of this wharf.

The Kigo Naval Dockyard (Target 7) is located at the south side of the port. Facilities are available to repair medium sized vessels and some small ships are constructed here.

THIS PAGE IS UNCLASSIFIED

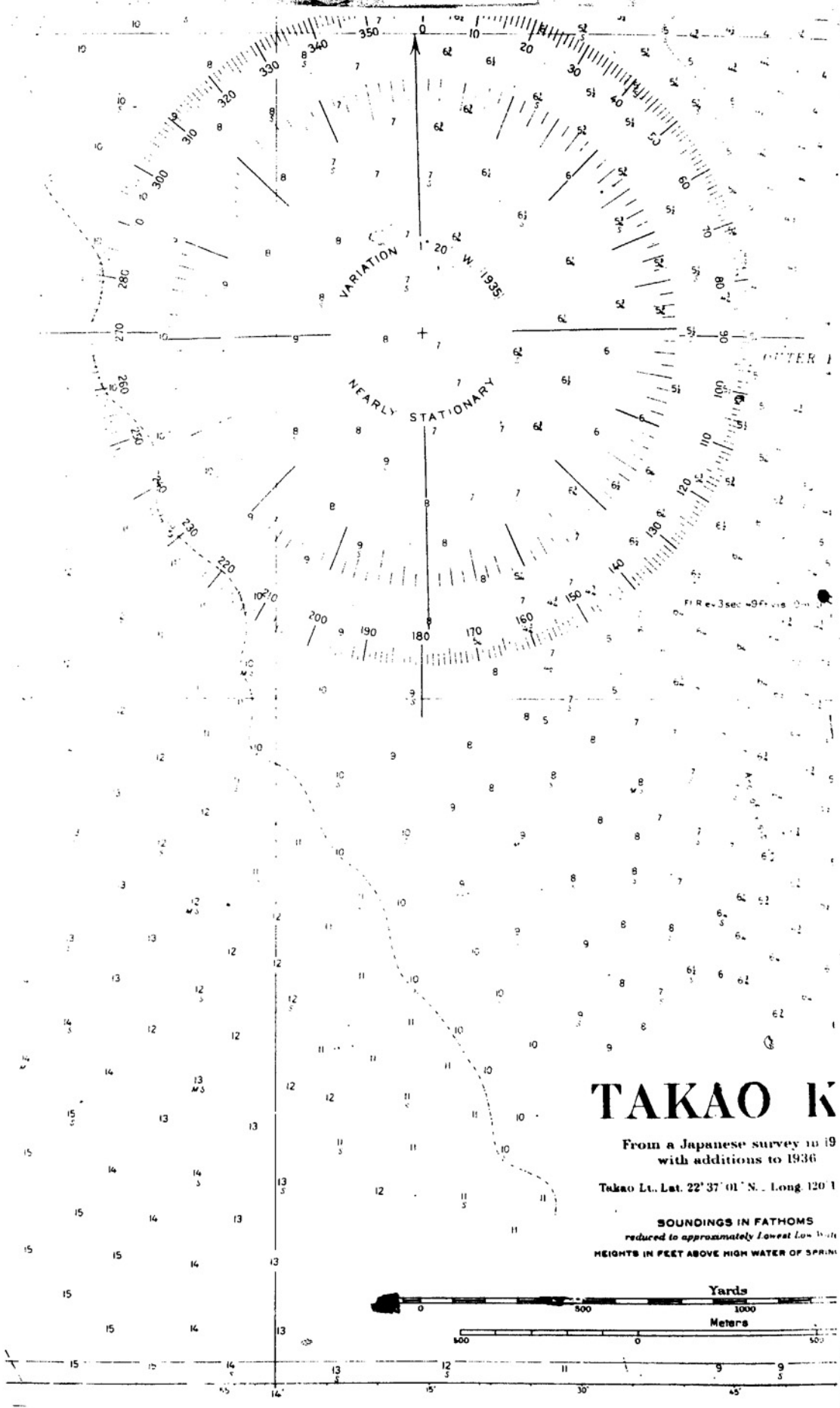
THIS PAGE IS UNCLASSIFIED



SECRET

LOOKING E
330.509

THIS PAGE IS UNCLASSIFIED

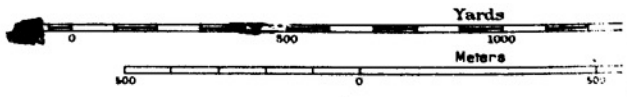


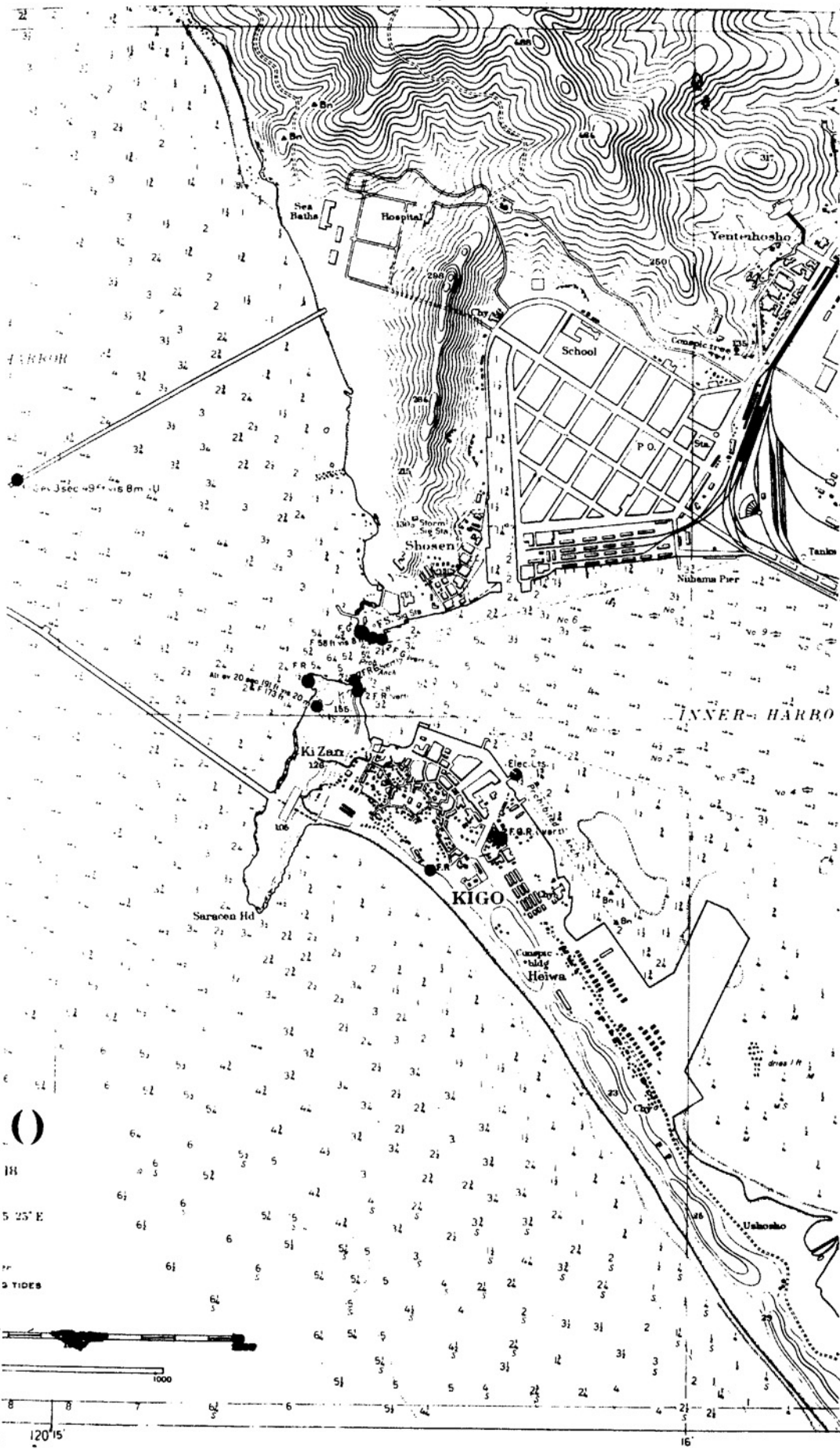
TAKAO K

From a Japanese survey in 19
with additions to 1936

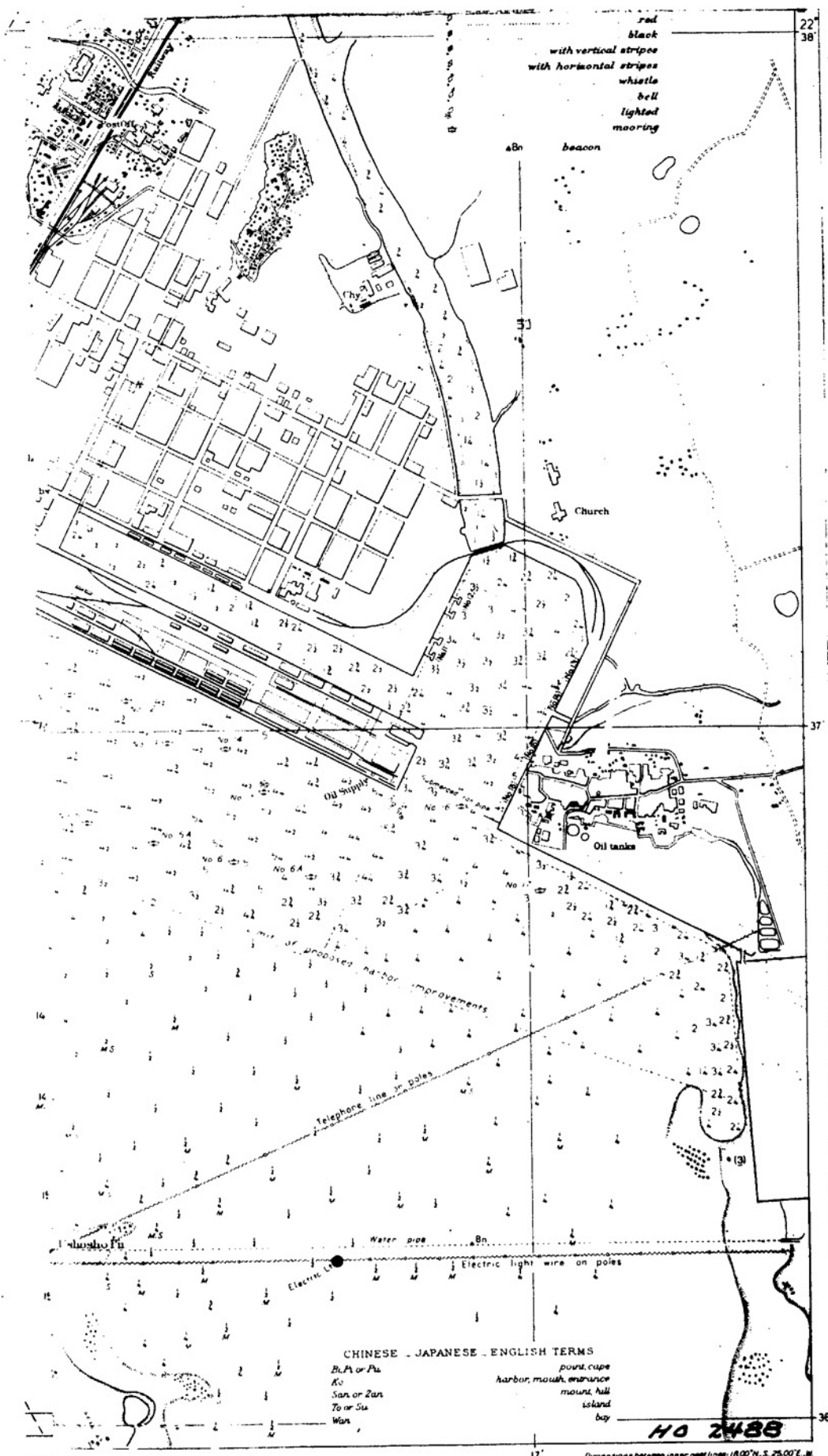
Takao Lt., Lat. 22° 37' 01" N., Long 120° 1

SOUNDINGS IN FATHOMS
reduced to approximately Lowest Low Water
HEIGHTS IN FEET ABOVE HIGH WATER OF SPRING





120 15



SECRET

JAPAN - HARBOUR FACILITIES AND WHARVES

TARGET NO.	TARGET	COMMENT	APPROXIMATE COORDINATES	TARGET CHART NO.
139	RUBIE ISLANDS (9L.1) (Continued) Shimshiru Anchorage Moyoro Anchorage Tannemoye Anchorage Naibo Anchorage Bettobu Anchorage	More data required	46°32'N 151°51'E	139
140		More data required	45°26'N 148°51'E	140
141		More data required	44°33'N 146°57'E	141
142		More data required	44°44'N 147°11'E	142
144		More data required	45°17'N 148°03'E	144
15a	TAIHOBU (9L.2) Northwest Keelung Wharves Southwest Keelung Wharves Eastern Keelung Wharves	Important	25°09'N 121°44'E	15a
15c		Important	25°08'N 121°44'E	15c
16		Minor	25°08'N 121°44'E	15a
100	TAIWAN WEST (9L.4) Gosel Harbor Anping Harbor (Tainan)	Expanded, believed important	24°15'N 120°32'E	100
101		Secondary	22°55'N 120°09'E	89
64	TAIWAN EAST (9L.5) Kareoko Wharves Suio Basin	Most important harbor E coast Taiwan	24°00'N 121°38'E	61
65		Rptd development into naval station	24°35'N 121°52'E	65

SECRET

0275

SECRET

JAPAN - HARBOR FACILITIES AND HARBOURS

TARGET NO.	TARGET	COMMENT	APPROXIMATE COORDINATES	TARGET CHART NO.
8a 8b	TAKAO (92.6) Military Storehouses (Takao) Military Storehouses (Takao)	Important New; more data required	22°37'N 120°17'E 22°37'N 120°17'E	8a 8a
13 14 15	CHOSUN (KOREA) (84) • SEISHIN (84.1) Seishin Harbor Rashin Harbor Yuki Harbor	Important commercial, military port Major military & commercial port Important military & commercial port	41°47'N 129°50'E 42°13'N 130°18'E 42°20'N 130°24'E	13 14 15
76 77 78 79 80	HEIJO (84.3) Chimampo Harbor Chimampo Naval Fuel Depot Rice Warehouses (Chimampo) Kanjicho Harbor Hosan Harbor	Second largest tonnage handled in Chosen Coal storage One of largest rice storage depots in Chosen Serves Japan Iron Co Takes ships to 5,000 tons New, for ships to 4,000 tons	38°43'N 125°25'E 38°43'N 125°25'E 38°44'N 125°25'E 38°44'N 125°38'E 38°53'N 125°35'E	76 76 76 66 80
89	GENSAN (84.4) Gensan Harbor	Growing modern all-purpose port	39°10'N 127°26'E	88
49	CHOSUN EAST (84.5) Chosunshin Harbor	Small SECRET	37°54'N 126°50'E	49

027

SECRET

JAPAN - NAVAL BASES AND SHIPYARDS

All targets in columns to
3/1/43, grouped by Areas

TARGET NO.	TARGET	CONTENT	APPROXIMATE COORDINATES	SECRET CHART NO.
43-a 43-b 558	<u>SUIJUNJI (20.34)</u> Mitsui Shipyard's Engine Works Casta Iron Works Drydock's Tochigi Shipbuilding Yards	Important; patrol boats, repairs ships to 6,000 tons Important ship repair Not secondary but extending	33°56'N 130°56'E 33°56'N 130°56'E 33°55'N 130°49'E	43-a 43-a 29
542 543 544 752 542 542	<u>SAGAMI (20.36)</u> Yamaguchi Iron Works (in Asahi) Yamaguchi Dockyard (Yamaguchi) Sagami Shipyard (Yamaguchi) Sagami Naval Dockyard Yamaguchi Iron Works (Yamaguchi) Yamaguchi Shipyard, various Iron Works	Very important, marine engine production Important repair dockyard Very important naval & commercial shipbuilding Very important; base, principal navy repair base Secondary, marine engine production Secondary shipbuilding	32°44'N 129°52'E 32°44'N 129°53'E 32°44'N 129°53'E 32°44'N 129°53'E 32°44'N 129°53'E 32°44'N 129°53'E	542 544 544 544 542 542
15-a 15-b 15-c 15-d	<u>TAIPEI (21.2)</u> Anshan Worker Dockyard, Taichang Dockyard Co Anshan Worker Dockyard Anshan Worker Dockyard Anshan Worker Dockyard	Important; only large dockyard in Taiwan Shipbuilding Not converted to submarine base	25°00'N 121°44'E 25°00'N 121°45'E 25°00'N 121°45'E	15-a 15-b 15-c 15-a

SECRET

0207

SECRET

All data in following
 3/7/53, traced by JRC

SECRET - SECURITY INFORMATION

REF ID	NAME	LOCATION	COORDINATES	REMARKS
7 56	<p><u>TAIPEI (CL-6)</u></p> <p>Major Naval Dockyard (Taipei) Tachien Dockyard (Tachien)</p>	<p>Only shipyard southern Taiwan New yards, size not known</p>	<p>22°37'N 120°16'E 22°21'N 120°10'E</p>	7 56
145-147 145-153 156, 158 148	<p><u>ANSON DOCK</u> (CL-7)</p> <p>Anson Naval Base Kofu Naval Anchorage</p>	<p>Key to naval defense of Taiwan Cruisers, submarine, motor-torpedo boat base</p>	<p>23°33'N 116°24'E 23°35'N 116°28'E</p>	148 148
87	<p><u>CHOSHEN (84)</u></p> <p><u>GENZAN (84-4)</u></p> <p>Gensan Submarine Base</p>	<p>New submarine base</p>	<p>30°12'N 127°29'E</p>	88
101 102	<p><u>CHINKAI NAVAL BASE</u></p> <p><u>CHINKAI NAVAL SHIPYARD</u></p>	<p>Fleet anchorage, minor naval sta, mine base Small ships, minor repairs to destroyer class</p>	<p>35°09'N 128°38'E 35°09'N 128°38'E</p>	101 101

SECRET

0290